

Cadherin-6 (CDH6) / K-Cadherin Antibody

Mouse Monoclonal Antibody [Clone CDH6/3191]

Catalog No	Format	Size
1004-MSM1-P0	Purified Ab with BSA and Azide at 200ug/ml	20 ug
1004-MSM1-P1	Purified Ab with BSA and Azide at 200ug/ml	100 ug
1004-MSM1-P1ABX	Purified Ab WITHOUT BSA and Azide at 1.0mg/ml	100 ug

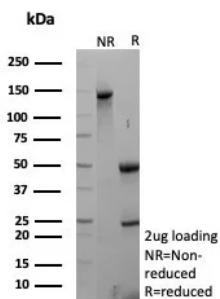
Applications	Tested Dillution	Note
Immunohistochemistry (IHC)	1-2ug/ml	30 min at RT. Staining of formalin-fixed tissues requires heating tissue sections in 10mM Tris with 1mM EDTA, pH 9.0, for 45 min at 95°C followed by cooling at RT for 20 minutes

Product Details

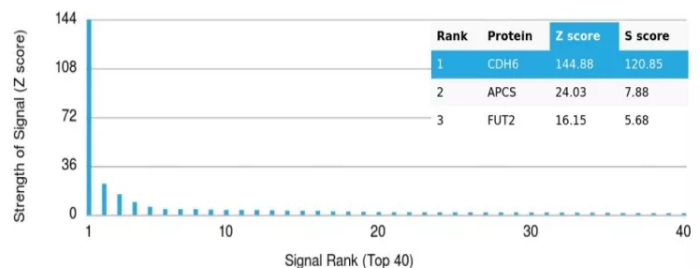
Clone	CDH6/3191
Gene Name	CDH6
Immunogen	Recombinant fragment (around aa 250-450) of human Cadherin 6 protein (CDH6) (exact sequence is proprietary)
Host	Mouse
Clonality	Monoclonal
Isotype / Light Chain	IgG2b / Kappa
Mol. Weight of Antigen	130kDa
Cellular Localization	Cell membrane
Species Reactivity	Human
Positive Control	Human kidney or renal cell carcinoma.

*Optimal dilution for a specific application should be determined.

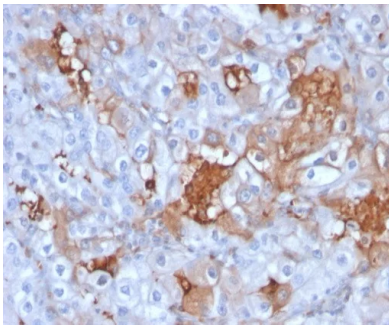
Product Images for Cadherin-6 (CDH6) / K-Cadherin Antibody



SDS-PAGE Analysis of Purified Cadherin 6 Mouse Monoclonal Antibody (CDH6/3191). Confirmation of Purity and Integrity of Antibody.



Analysis of Protein Array containing more than 19,000 full-length human proteins using Cadherin 6 (CDH6) Mouse Monoclonal Antibody (CDH6/3191). Z- and S- Score: The Z-score represents the strength of a signal that a monoclonal antibody (MAb) (in combination with a fluorescently-tagged anti-IgG secondary antibody) produces when binding to a particular protein on the HuProt™ array. Z-scores are described in units of standard deviations (SD's) above the mean value of all signals generated on that array. If targets on HuProt™ are arranged in descending order of the Z-score, the S-score is the difference (also in units of SD's) between the Z-score. S-score therefore represents the relative target specificity of a MAb to its intended target. A MAb is considered to be specific to its intended target, if the MAb has an S-score of at least 2.5. For example, if a MAb binds to protein X with a Z-score of 43 and to protein Y with a Z-score of 14, then the S-score for the binding of that MAb to protein X is equal to 29.



Formalin-fixed, paraffin-embedded human renal cell carcinoma stained with Cadherin6 Mouse Monoclonal Antibody (CDH6/3191). HIER: Tris/EDTA, pH9.0, 45min. 2°C: HRP-polymer, 30min. DAB, 5min.

Specificity & Comments

This gene encodes a type II classical cadherin from the cadherin superfamily. The encoded membrane protein is a calcium dependent cell-cell adhesion glycoprotein composed of five extracellular cadherin repeats, a transmembrane region and a highly conserved cytoplasmic tail. Cadherins mediate cell-cell binding in a homophilic manner, contributing to the sorting of heterogeneous cell types and the maintenance of orderly structures such as epithelium. Strong transcriptional expression of this gene has been observed in hepatocellular and renal carcinoma cell lines, suggesting a possible role in metastasis and invasion. This protein may play a role in kidney development as well as endometrium and placenta formation. Decreased expression of this gene may be associated with tumor growth and metastasis.

Limitations and Warranty

This antibody is available for research use only and is not approved for use in diagnosis. There are no warranties, expressed or implied, which extend beyond this description. Company is not liable for any personal injury or economic loss resulting from this product.

Supplied As

200ug/ml of Ab purified from Bioreactor Concentrate by Protein A/G. Prepared in 10mM PBS with 0.05% BSA & 0.05% azide. Also available WITHOUT BSA & azide at 1.0mg/ml.

Storage and Stability

Antibody with azide - store at 2 to 8°C. Antibody without azide - store at -20 to -80°C. Antibody is stable for 24 months. Non-hazardous. No MSDS required.
