

## Recombinant CD269 / TNFRSF17 / BCMA (B-Cell Maturation Protein) Antibody

Rabbit Monoclonal Antibody [Clone CD269/8190R]

Catalog No	Format	Size
608-RBM8-P0	Purified Ab with BSA and Azide at 200ug/ml	20 ug
608-RBM8-P1	Purified Ab with BSA and Azide at 200ug/ml	100 ug
608-RBM8-P1ABX	Purified Ab WITHOUT BSA and Azide at 1.0mg/ml	100 ug

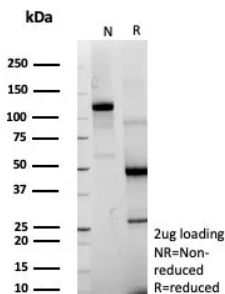
Applications	Tested Dillution	Note
Immunohistochemistry (IHC)	1-2ug/ml	30 min at RT. Staining of formalin-fixed tissues requires heating tissue sections in 10mM Tris with 1mM EDTA, pH 9.0, for 45 min at 95°C followed by cooling at RT for 20 minutes

### Product Details

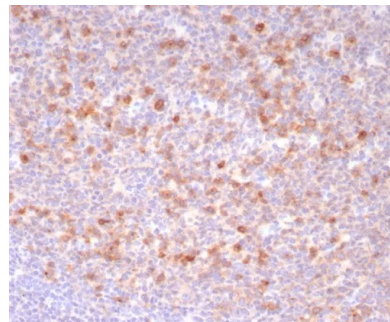
<b>Clone</b>	CD269/8190R
<b>Gene Name</b>	TNFRSF17
<b>Immunogen</b>	Recombinant human CD269 protein fragment (around aa 1-184) (exact sequence is proprietary)
<b>Host</b>	Rabbit
<b>Clonality</b>	Monoclonal
<b>Isotype / Light Chain</b>	IgG / Kappa
<b>Mol. Weight of Antigen</b>	20kDa
<b>Cellular Localization</b>	Cell surface.
<b>Species Reactivity</b>	Human
<b>Positive Control</b>	NAMALWA cells. Tonsil or gastric carcinoma (IHC).

\*Optimal dilution for a specific application should be determined.

### Product Images for Recombinant CD269 / TNFRSF17 / BCMA (B-Cell Maturation Protein) Antibody



SDS-PAGE Analysis of Purified CD269 Recombinant Rabbit Monoclonal Antibody (CD269/8190R). Confirmation of Purity and Integrity of Antibody.



Formalin-fixed, paraffin-embedded human tonsil stained with CD269 Recombinant Rabbit Monoclonal Antibody (CD269/8190R). HIER: Tris/EDTA, pH9.0, 45min. 2°C: HRP-polymer, 30min. DAB, 5min.

### Specificity & Comments

The B cell maturation protein (BCMA) is a type I integral membrane protein that belongs to the tumor necrosis factor receptor (TNF-R) superfamily. It is expressed as a 184 amino acid peptide that is expressed only in mature B-lymphocytes and is located on the cis part of the Golgi apparatus. BCMA shares significant homology with TACI (transmembrane activator) within the cysteine-rich domain. TACI has been shown to bind CAML, which induces activation of NFAT (nuclear factor of activated T cells). Both BCMA and TACI have been shown to bind APRIL and TALL-1, which stimulate B cell proliferation in conjunction with other B-cell activators. When overexpressed, TALL-1 stimulates the development of systemic lupus erythematosus (SLE).

### Supplied As

200ug/ml of Ab purified from Bioreactor Concentrate by Protein A/G. Prepared in 10mM PBS with 0.05% BSA & 0.05% azide. Also available WITHOUT BSA & azide at 1.0mg/ml.

### Storage and Stability

Antibody with azide - store at 2 to 8°C. Antibody without azide - store at -20 to -80°C. Antibody is stable for 24 months. Non-hazardous. No MSDS required.

### Research Areas

AKT Signaling, B Cell Markers, Cytokine Signaling, Immunology

## Limitations and Warranty

This antibody is available for research use only and is not approved for use in diagnosis. There are no warranties, expressed or implied, which extend beyond this description. Company is not liable for any personal injury or economic loss resulting from this product.

---