

Recombinant MART-1 / Melan-A / MLANA (Melanoma Marker) Antibody

Rabbit Monoclonal Antibody [Clone MLANA/8365R]

Catalog No	Format	Size
2315-RBM23-P0	Purified Ab with BSA and Azide at 200ug/ml	20 ug
2315-RBM23-P1	Purified Ab with BSA and Azide at 200ug/ml	100 ug
2315-RBM23-P1ABX	Purified Ab WITHOUT BSA and Azide at 1.0mg/ml	100 ug

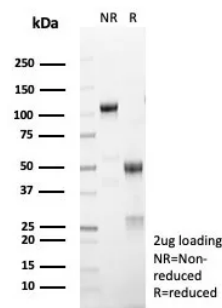
Applications	Tested Dillution	Note
Immunohistochemistry (IHC)	1-2ug/ml	30 min at RT. Staining of formalin-fixed tissues requires heating tissue sections in 10mM Tris with 1mM EDTA, pH 9.0, for 45 min at 95°C followed by cooling at RT for 20 minutes

Product Details

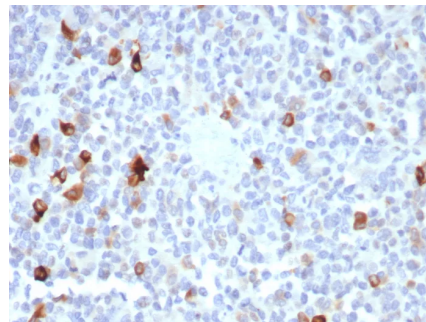
Clone	MLANA/8365R
Gene Name	MLANA
Immunogen	Recombinant fragment corresponding to the N-terminus of human Melan A protein
Host	Rabbit
Clonality	Monoclonal
Isotype / Light Chain	IgG / Kappa
Mol. Weight of Antigen	20-22kDa (doublet)
Cellular Localization	Cytoplasm.
Species Reactivity	Human
Positive Control	Human skin or melanoma.

*Optimal dilution for a specific application should be determined.

Product Images for Recombinant MART-1 / Melan-A / MLANA (Melanoma Marker) Antibody



SDS-PAGE Analysis of Purified MART-1 Recombinant Rabbit Monoclonal Antibody (MLANA/8365R). Confirmation of Purity and Integrity of Antibody.



Formalin-fixed, paraffin-embedded human melanoma stained with MART-1 Recombinant Rabbit Monoclonal Antibody (MLANA/8365R). HIER: Tris/EDTA, pH9.0, 45min. 2: HRP-polymer, 30min. DAB, 5min.

Specificity & Comments

This antibody recognizes a protein doublet of 20-22kDa, identified as MART-1 (Melanoma Antigen Recognized by T cells 1) or Melan-A. MART-1 is a newly identified melanocyte differentiation antigen recognized by autologous cytotoxic T lymphocytes. Seven other melanoma associated antigens recognized by autologous cytotoxic T cells include MAGE-1, MAGE-3, tyrosinase, gp100, gp75, BAGE-1, and GAGE-1. Subcellular fractionation shows that MART-1 is present in melanosomes and endoplasmic reticulum. This MAb labels melanomas and other tumors showing melanocytic differentiation. It is also a useful positive-marker for angiomylipomas. It does not stain tumor cells of epithelial, lymphoid, glial, or mesenchymal origin.

Supplied As

200ug/ml of Ab purified from Bioreactor Concentrate by Protein A/G. Prepared in 10mM PBS with 0.05% BSA & 0.05% azide. Also available WITHOUT BSA & azide at 1.0mg/ml.

Storage and Stability

Antibody with azide - store at 2 to 8°C. Antibody without azide - store at -20 to -80°C. Antibody is stable for 24 months. Non-hazardous. No MSDS required.

Limitations and Warranty

This antibody is available for research use only and is not approved for use in diagnosis. There are no warranties, expressed or implied, which extend beyond this description. Company is not liable for any personal injury or economic loss resulting from this product.
