

## Recombinant p63 / TP63 (Squamous, Basal & Myoepithelial Cell Marker) Antibody

Rabbit Monoclonal Antibody [Clone TP63/7807R]

Catalog No	Format	Size
8626-RBM23-P0	Purified Ab with BSA and Azide at 200ug/ml	20 ug
8626-RBM23-P1	Purified Ab with BSA and Azide at 200ug/ml	100 ug
8626-RBM23-P1ABX	Purified Ab WITHOUT BSA and Azide at 1.0mg/ml	100 ug

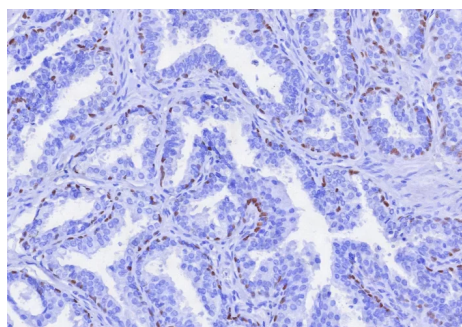
Applications	Tested Dillution	Note
Immunohistochemistry (IHC)	1-2ug/ml	30 min at RT. Staining of formalin-fixed tissues requires heating tissue sections in 10mM Tris with 1mM EDTA, pH 9.0, for 45 min at 95°C followed by cooling at RT for 20 minutes

### Product Details

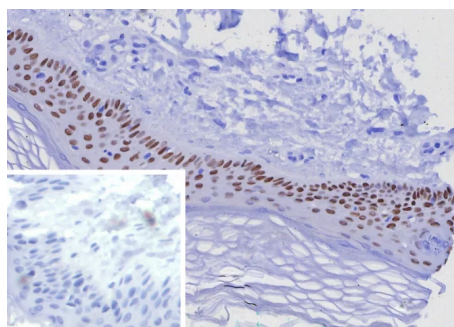
<b>Clone</b>	TP63/7807R
<b>Gene Name</b>	TP63
<b>Immunogen</b>	Recombinant fragment corresponding to the C-terminus of human TP63 protein (exact sequence is proprietary)
<b>Host</b>	Rabbit
<b>Clonality</b>	Monoclonal
<b>Isotype / Light Chain</b>	IgG / Kappa
<b>Mol. Weight of Antigen</b>	63kDa
<b>Cellular Localization</b>	Nucleus.
<b>Species Reactivity</b>	Human
<b>Positive Control</b>	HEK293 lung or bladder squamous cell carcinoma tissue. MDA-MB453 or MCF7 cells. Human prostate

\*Optimal dilution for a specific application should be determined.

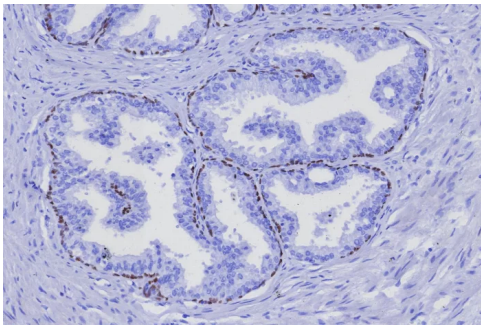
### Product Images for Recombinant p63 / TP63 (Squamous, Basal & Myoepithelial Cell Marker) Antibody



Formalin-fixed, paraffin-embedded human prostate cancer stained with p63 Recombinant Rabbit Monoclonal Antibody (TP63/7807R). HIER: Tris/EDTA, pH9.0, 45min. 2: HRP-polymer, 30min. DAB, 5min.



Formalin-fixed, paraffin-embedded human skin stained with p63 Recombinant Rabbit Monoclonal Antibody (TP63/7807R). Inset: PBS instead of primary antibody; secondary only negative control.



Formalin-fixed, paraffin-embedded human prostate cancer stained with p63 Recombinant Rabbit Monoclonal Antibody (TP63/7807R). HIER: Tris/EDTA, pH9.0, 45min. 2: HRP-polymer, 30min. DAB, 5min.

---

### Specificity & Comments

p63 is a homolog of the tumor suppressor p53. It is identified in basal cells in the epithelial layers of a variety of tissues, including epidermis, cervix, urothelium, breast and prostate. p63 was detected in nuclei of the basal epithelium in normal prostate glands; however, it was not expressed in malignant tumors of the prostate. As a result, p63 has been reported as a useful marker for differentiating benign from malignant lesions in the prostate, particularly when used in combination with markers of high molecular weight cytokeratins and the prostate-specific marker AMACR (P504S). p63 has also been shown to be a sensitive marker for lung squamous cell carcinomas (SqCC), with a sensitivity of ~90%. Specificity for lung SqCC, vs. lung adenocarcinoma (LADC), is approximately 80%. In breast tissue, p63 has been identified in myoepithelial cells of normal ducts.

---

### Limitations and Warranty

This antibody is available for research use only and is not approved for use in diagnosis. There are no warranties, expressed or implied, which extend beyond this description. Company is not liable for any personal injury or economic loss resulting from this product.

---

### Supplied As

200ug/ml of Ab purified by Protein A Column. Prepared in 10mM PBS with 0.05% BSA & 0.05% azide. Also available WITHOUT BSA & azide at 1.0mg/ml.

---

### Storage and Stability

Antibody with azide - store at 2 to 8°C. Antibody without azide - store at -20 to -80°C. Antibody is stable for 24 months. Non-hazardous. No MSDS required.

---

### Research Areas

Basal Cell Marker, Nuclear Marker, Stem Cell Differentiation, Transcription Factors

---