

## Recombinant Uroplakin 1A (Urothelial Differentiation Marker) Antibody

Rabbit Monoclonal Antibody [Clone UPK1A/8704R]

Catalog No	Format	Size
11045-RBM9-P0	Purified Ab with BSA and Azide at 200ug/ml	20 ug
11045-RBM9-P1	Purified Ab with BSA and Azide at 200ug/ml	100 ug
11045-RBM9-P1ABX	Purified Ab WITHOUT BSA and Azide at 1.0mg/ml	100 ug

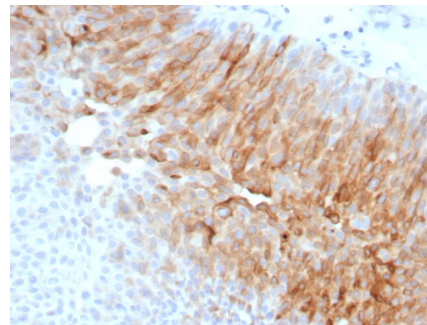
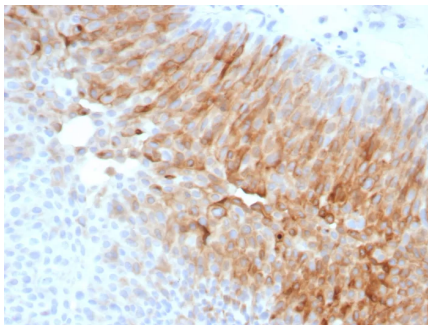
Applications	Tested Dillution	Note
Immunohistochemistry (IHC)	1-2ug/ml	30 min at RT. Staining of formalin-fixed tissues requires heating tissue sections in 10mM Tris with 1mM EDTA, pH 9.0, for 45 min at 95°C followed by cooling at RT for 20 minutes

### Product Details

<b>Clone</b>	UPK1A/8704R
<b>Gene Name</b>	UPK1A
<b>Immunogen</b>	Recombinant fragment (around aa 100-200) of human Uroplakin 1A (UPK1A) protein (exact sequence is proprietary)
<b>Host</b>	Rabbit
<b>Clonality</b>	Monoclonal
<b>Isotype / Light Chain</b>	IgG / Kappa
<b>Mol. Weight of Antigen</b>	29kDa
<b>Cellular Localization</b>	Cell surface
<b>Species Reactivity</b>	Human
<b>Positive Control</b>	Urinary Bladder

\*Optimal dilution for a specific application should be determined.

### Product Images for Recombinant Uroplakin 1A (Urothelial Differentiation Marker) Antibody



Formalin-fixed, paraffin-embedded human bladder carcinoma stained with Uroplakin 1A Recombinant Rabbit Monoclonal Antibody (UPK1A/8704R). HIER: Tris/EDTA, pH9.0, 45min. 2: HRP-polymer, 30min. DAB, 5min.

Formalin-fixed, paraffin-embedded human bladder carcinoma stained with Uroplakin 1A Recombinant Rabbit Monoclonal Antibody (UPK1A/8704R). HIER: Tris/EDTA, pH9.0, 45min. 2: HRP-polymer, 30min. DAB, 5min.

**Specificity & Comments**

The protein encoded by this gene is a member of the transmembrane 4 superfamily, also known as the tetraspanin family. Most of these members are cell-surface proteins that are characterized by the presence of four hydrophobic domains. The proteins mediate signal transduction events that play a role in the regulation of cell development, activation, growth and motility. This encoded protein is found in the asymmetrical unit membrane (AUM) where it can complex with other transmembrane 4 superfamily proteins. It may play a role in normal bladder epithelial physiology, possibly in regulating membrane permeability of superficial umbrella cells or in stabilizing the apical membrane through AUM/cytoskeletal interactions. The protein may also play a role in tumor suppression.Â ?

---

**Limitations and Warranty**

This antibody is available for research use only and is not approved for use in diagnosis. There are no warranties, expressed or implied, which extend beyond this description. Company is not liable for any personal injury or economic loss resulting from this product.

---

**Supplied As**

200ug/ml of Ab purified from Bioreactor Concentrate by Protein A/G. Prepared in 10mM PBS with 0.05% BSA & 0.05% azide. Also available WITHOUT BSA & azide at 1.0mg/ml.

---

**Storage and Stability**

Antibody with azide - store at 2 to 8°C. Antibody without azide - store at -20 to -80°C. Antibody is stable for 24 months. Non-hazardous. No MSDS required.

---