

Recombinant HSV1 (Herpes Simplex Virus Type I) Antibody

Rabbit Monoclonal Antibody [Clone HSVI/8375R]

Catalog No	Format	Size
RBM7-8375-P0	Purified Ab with BSA and Azide at 200ug/ml	20 ug
RBM7-8375-P1	Purified Ab with BSA and Azide at 200ug/ml	100 ug
RBM7-8375-P1ABX	Purified Ab WITHOUT BSA and Azide at 1.0mg/ml	100 ug

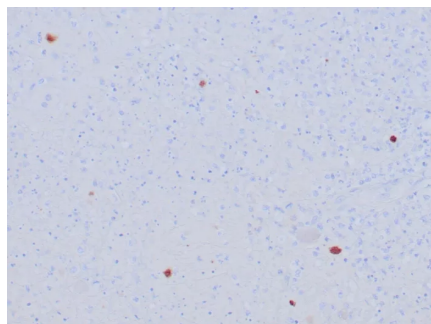
Applications	Tested Dillution	Note
Immunohistochemistry (IHC)	1-2ug/ml	30 min at RT. Staining of formalin-fixed tissues requires heating tissue sections in 10mM Tris with 1mM EDTA, pH 9.0, for 45 min at 95°C followed by cooling at RT for 20 minutes

Product Details

Clone	HSVI/8375R
Gene Name	
Immunogen	Detergent-solubilized herpes simplex virus (HSV) type 1 infected cells
Host	Rabbit
Clonality	Monoclonal
Isotype / Light Chain	IgG / Kappa
Mol. Weight of Antigen	N/A
Cellular Localization	Cytoplasm. Nucleus.
Species Reactivity	HSV1 (Herpes Simplex Virus 1)
Positive Control	HSV1 infected cells or tissue

*Optimal dilution for a specific application should be determined.

Product Images for Recombinant HSV1 (Herpes Simplex Virus Type I) Antibody



Formalin-fixed, paraffin-embedded human HSV-infected tissue stained with HSV1 Recombinant Rabbit Monoclonal Antibody (HSVI/8375R). HIER: Tris/EDTA, pH9.0, 45min. 2: HRP-polymer, 30min. DAB, 5min.

Specificity & Comments

The antibody reacts with HSV type 1 specific antigen. It is suitable for detection of HSV in human cellular material obtained from superficial lesions or biopsies and for the early identification of HSV in infected tissue cultures. The herpes simplex virus (HSV) (also known as cold sore, night fever or fever blister) is a virus that causes a contagious disease. There are two main types of Herpes Simplex Virus (HSV), 1 and 2. The HSV-1 strain generally appears in the orofacial organs. HSV2 usually resides in the sacral ganglion at the base of the spine. All herpes viruses are morphologically identical: they have a large double-stranded DNA genome and the virion consists of an icosahedral nucleo-capsid, which is surrounded by a lipid bilayer envelope.

Supplied As

200ug/ml of Ab purified by Protein A. Prepared in 10mM PBS with 0.05% BSA & 0.05% azide. Also available WITHOUT BSA at 1.0mg/ml.

Storage and Stability

Antibody with azide - store at 2 to 8°C. Antibody without azide - store at -20 to -80°C. Antibody is stable for 24 months. Non-hazardous. No MSDS required.

Limitations and Warranty

This antibody is available for research use only and is not approved for use in diagnosis. There are no warranties, expressed or implied, which extend beyond this description. Company is not liable for any personal injury or economic loss resulting from this product.
