

Recombinant Glypican-3 (GPC3) (Hepatocellular Carcinoma Marker) Antibody

Rabbit Monoclonal Antibody [Clone GPC3/8363R]

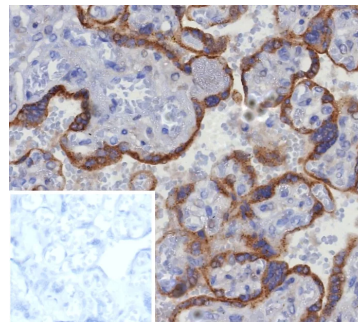
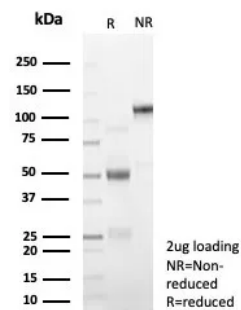
Catalog No	Format	Size
2719-RBM13-P0	Purified Ab with BSA and Azide at 200ug/ml	20 ug
2719-RBM13-P1	Purified Ab with BSA and Azide at 200ug/ml	100 ug
2719-RBM13-P1ABX	Purified Ab WITHOUT BSA and Azide at 1.0mg/ml	100 ug

Applications	Tested Dillution	Note
Immunohistochemistry (IHC)	1-2ug/ml	30 min at RT. Staining of formalin-fixed tissues requires heating tissue sections in 10mM Tris with 1mM EDTA, pH 9.0, for 45 min at 95°C followed by cooling at RT for 20 minutes

Product Details	
Clone	GPC3/8363R
Gene Name	GPC3
Immunogen	Recombinant fragment (around aa400-550) of human GPC3 protein (exact sequence is proprietary)
Host	Rabbit
Clonality	Monoclonal
Isotype / Light Chain	IgG / Kappa
Mol. Weight of Antigen	67kDa
Cellular Localization	Cytoplasm.
Species Reactivity	Human
Positive Control	Human placenta or hepatocellular carcinoma.

*Optimal dilution for a specific application should be determined.

Product Images for Recombinant Glypican-3 (GPC3) (Hepatocellular Carcinoma Marker) Antibody



SDS-PAGE Analysis of Purified GPC3 Recombinant Rabbit Monoclonal Antibody (GPC3/8363R). Confirmation of Purity and Integrity of Antibody.

Formalin-fixed, paraffin-embedded human placenta stained with Glypican-3 Recombinant Rabbit Monoclonal Antibody (GPC3/8363R). Inset: PBS instead of primary antibody; secondary only negative control.

Specificity & Comments

Glypican-3 (GPC3) is a glycosylphosphatidyl inositol-anchored membrane protein, which may also be found in a secreted form. Anti-GPC3 has been identified as a useful tumor marker for the diagnosis of hepatocellular carcinoma (HCC), hepatoblastoma, melanoma, testicular germ cell tumors, and Wilm s tumor. In patients with HCC, GPC3 is overexpressed in neoplastic liver tissue and elevated in serum, but is undetectable in normal liver, benign liver, and the serum of healthy donors. GPC3 expression is also found to be higher in HCC liver tissue than in cirrhotic liver or liver with focal lesions such as dysplastic nodules and areas of hepatic adenoma (HA) with malignant transformation. In the context of testicular germ cell tumors, GPC3 expression is up regulated in certain histologic subtypes, specifically yolk sac tumors and choriocarcinoma. A high level of GPC3 expression is also found in some types of embryonal tumors, such as Wilm s tumor and hepatoblastoma, with a low or undetectable expression in normal adjacent tissue. In patients with thyroid cancer, expression of GPC3 is dramatically enhanced in certain types of cancers: 100% in follicular carcinoma and 70% in papillary carcinoma. Expression of GPC3 in follicular carcinoma is significantly higher than that of follicular adenoma. In contrast, GPC3 is not expressed in anaplastic carcinoma.

Limitations and Warranty

This antibody is available for research use only and is not approved for use in diagnosis. There are no warranties, expressed or implied, which extend beyond this description. Company is not liable for any personal injury or economic loss resulting from this product.

Supplied As

200ug/ml of Ab purified by Protein A Column. Prepared in 10mM PBS with 0.05% BSA & 0.05% azide. Also available WITHOUT BSA & azide at 1.0mg/ml.

Storage and Stability

Antibody with azide - store at 2 to 8°C. Antibody without azide - store at -20 to -80°C. Antibody is stable for 24 months. Non-hazardous. No MSDS required.

Research Areas

Cardiovascular, Infectious Disease
