

## PAX4 Antibody

Mouse Monoclonal Antibody [Clone PAX4/7598]

Catalog No	Format	Size
5078-MSM3-P0	Purified Ab with BSA and Azide at 200ug/ml	20 ug
5078-MSM3-P1	Purified Ab with BSA and Azide at 200ug/ml	100 ug
5078-MSM3-P1ABX	Purified Ab WITHOUT BSA and Azide at 1.0mg/ml	100 ug

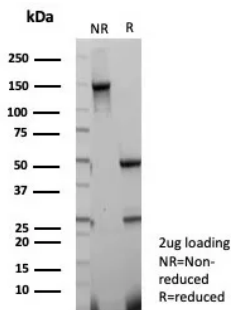
Applications	Tested Dillution	Note
Immunohistochemistry (IHC)	1-2ug/ml	30 min at RT. Staining of formalin-fixed tissues requires heating tissue sections in 10mM Tris with 1mM EDTA, pH 9.0, for 45 min at 95°C followed by cooling at RT for 20 minutes

### Product Details

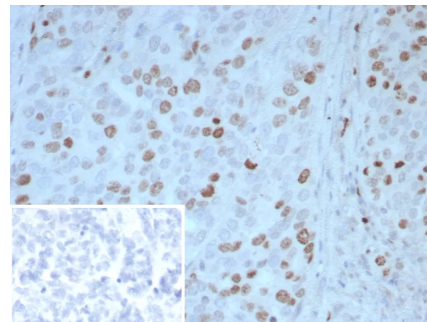
<b>Clone</b>	PAX4/7598
<b>Gene Name</b>	PAX4
<b>Immunogen</b>	Recombinant fragment (around aa1-200) of human PAX4 protein (exact sequence is proprietary)
<b>Host</b>	Mouse
<b>Clonality</b>	Monoclonal
<b>Isotype / Light Chain</b>	IgG1 / Kappa
<b>Mol. Weight of Antigen</b>	38kDa
<b>Cellular Localization</b>	Nucleus.
<b>Species Reactivity</b>	Human
<b>Positive Control</b>	DAUDI or Ramos cells. Human tonsil lymph node or colon carcinoma. Raji spleen

\*Optimal dilution for a specific application should be determined.

### Product Images for PAX4 Antibody



SDS-PAGE Analysis of Purified PAX4 Mouse Monoclonal Antibody (PAX4/7598). Confirmation of Purity and Integrity of Antibody.



Formalin-fixed, paraffin-embedded human ovarian carcinoma stained with PAX4 Mouse Monoclonal Antibody (PAX4/7598). Inset: PBS instead of primary antibody; secondary only negative control.

### Specificity & Comments

Pax-4 (paired box gene 4) protein influences normal differentiation of Insulinproducing  $\beta$  cells and influences normal pancreatic islet development. Pax-4 protein is a transcriptional repressor that binds to a common cis element in the Glucagon, Insulin and Somatostatin promoters. Mouse Pax-4 transcript is present in pancreatic islets, and the islet  $\beta$  cell lines MIN6,  $\beta$  TC and NIT1. Differentiation of endoderm-derived endocrine pancreas is mediated through Pax-4 and Pax-6. Pax-4 may act as a Pax-6 repressor due to the competition for binding sites and lower transactivation potential of Pax-4. The human Pax-4 gene encodes a deduced 350 amino acid protein that is 80% identical to the deduced mouse Pax-4 protein.

### Supplied As

200ug/ml of Ab purified from Bioreactor Concentrate by Protein A/G. Prepared in 10mM PBS with 0.05% BSA & 0.05% azide. Also available WITHOUT BSA & azide at 1.0mg/ml.

### Storage and Stability

Antibody with azide - store at 2 to 8°C. Antibody without azide - store at -20 to -80°C. Antibody is stable for 24 months. Non-hazardous. No MSDS required.

### Research Areas

Stem Cell Differentiation

## Limitations and Warranty

This antibody is available for research use only and is not approved for use in diagnosis. There are no warranties, expressed or implied, which extend beyond this description. Company is not liable for any personal injury or economic loss resulting from this product.

---