

Recombinant CD31 / PECAM-1 (Endothelial Cell Marker) Antibody

Rabbit Monoclonal Antibody [Clone C31/9224R]

Catalog No	Format	Size
5175-RBM54-P0	Purified Ab with BSA and Azide at 200ug/ml	20 ug
5175-RBM54-P1	Purified Ab with BSA and Azide at 200ug/ml	100 ug
5175-RBM54-P1ABX	Purified Ab WITHOUT BSA and Azide at 1.0mg/ml	100 ug

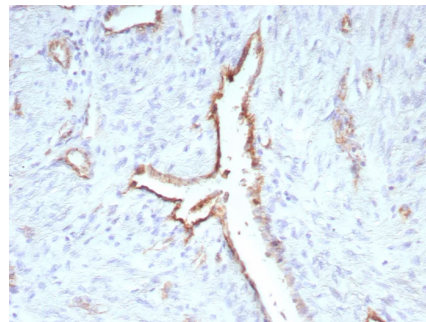
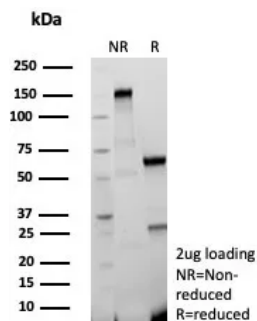
Applications	Tested Dillution	Note
Immunohistochemistry (IHC)	1-2ug/ml	30 min at RT. Staining of formalin-fixed tissues requires heating tissue sections in 10mM Tris with 1mM EDTA, pH 9.0, for 45 min at 95°C followed by cooling at RT for 20 minutes

Product Details

Clone	C31/9224R
Gene Name	PECAM-1
Immunogen	Recombinant fragment (around aa 538-738) of human PECAM1 protein (exact sequence is proprietary)
Host	Rabbit
Clonality	Monoclonal
Isotype / Light Chain	IgG / Kappa
Mol. Weight of Antigen	~100kDa (endothelium) and ~130kDa (platelets) $\frac{1}{2}$
Cellular Localization	Cell Surface. Cytoplasm.
Species Reactivity	Human
Positive Control	Jurkat or THP-1 cells. Human tonsil or angiosarcoma.

*Optimal dilution for a specific application should be determined.

Product Images for Recombinant CD31 / PECAM-1 (Endothelial Cell Marker) Antibody



SDS-PAGE Analysis of Purified CD31 Rabbit Recombinant Monoclonal Antibody (C31/9224R). Confirmation of Purity and Integrity of Antibody.

Formalin-fixed, paraffin-embedded human uterus stained with CD31 Rabbit Recombinant Monoclonal Antibody (C31/9224R). HIER: Tris/EDTA, pH9.0, 45min. 2°C: HRP-polymer, 30min. DAB, 5min.

Specificity & Comments

CD31 (PECAM-1) is a transmembrane glycoprotein member of the immunoglobulin supergene family of adhesion molecules. CD31 is expressed by stem cells of the hematopoietic system and is primarily used to identify and concentrate these cells for experimental studies as well as for bone marrow transplantation. Anti-CD31 has shown to be highly specific and sensitive for vascular endothelial cells. Staining of nonvascular tumors (excluding hematopoietic neoplasms) is rare. CD31 MAb reacts with normal, benign, and malignant endothelial cells which make up blood vessel lining. The level of CD31 expression can help to determine the degree of tumor angiogenesis, and a high level of CD31 expression may imply a rapidly growing tumor and potentially a predictor of tumor recurrence.

Limitations and Warranty

This antibody is available for research use only and is not approved for use in diagnosis. There are no warranties, expressed or implied, which extend beyond this description. Company is not liable for any personal injury or economic loss resulting from this product.

Supplied As

200ug/ml of Ab purified from Bioreactor Concentrate by Protein A/G. Prepared in 10mM PBS with 0.05% BSA & 0.05% azide. Also available WITHOUT BSA & azide at 1.0mg/ml.

Storage and Stability

Antibody with azide - store at 2 to 8°C. Antibody without azide - store at -20 to -80°C. Antibody is stable for 24 months. Non-hazardous. No MSDS required.

Research Areas

Cardiovascular, Immunology, Angiogenesis, Endothelial Cell Marker
