

## S100A1 (Melanoma Marker) Antibody

Rabbit Monoclonal Antibody [Clone S100A1/9244R]

Catalog No	Format	Size
6271-RBM6-P0	Purified Ab with BSA and Azide at 200ug/ml	20 ug
6271-RBM6-P1	Purified Ab with BSA and Azide at 200ug/ml	100 ug
6271-RBM6-P1ABX	Purified Ab WITHOUT BSA and Azide at 1.0mg/ml	100 ug

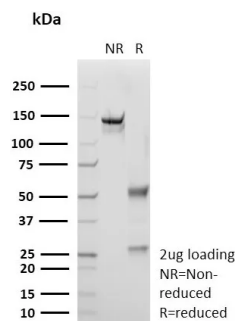
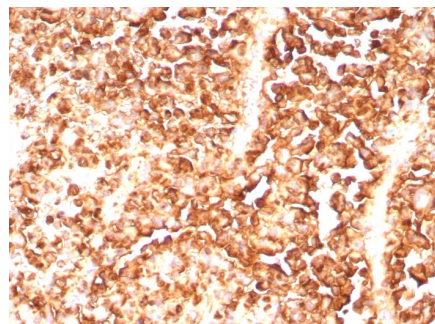
Applications	Tested Dillution	Note
Immunohistochemistry (IHC)	1-2ug/ml	30 min at RT. Staining of formalin-fixed tissues requires heating tissue sections in 10mM Tris with 1mM EDTA, pH 9.0, for 45 min at 95°C followed by cooling at RT for 20 minutes

### Product Details

<b>Clone</b>	S100A1/9244R
<b>Gene Name</b>	S100A1
<b>Immunogen</b>	Recombinant fragment (around aa1-94) of human S100A1 protein (exact sequence is proprietary)
<b>Host</b>	Rabbit
<b>Clonality</b>	Monoclonal
<b>Isotype / Light Chain</b>	IgG / Kappa
<b>Mol. Weight of Antigen</b>	10-12kDa
<b>Cellular Localization</b>	Cytoplasm
<b>Species Reactivity</b>	Human
<b>Positive Control</b>	Human brain or melanoma.

\*Optimal dilution for a specific application should be determined.

### Product Images for S100A1 (Melanoma Marker) Antibody



Formalin-fixed, paraffin-embedded human melanoma stained with S100A1 Rabbit Monoclonal Antibody (S100A1/9244R). HIER: Tris/EDTA, pH9.0, 45min. 2°C: HRP-polymer, 30min. DAB, 5min.

SDS PAGE Analysis Purified S100A1 Rabbit Monoclonal Antibody (S100A1/9244R). Confirmation of Purity and Integrity of Antibody.

**Specificity & Comments**

S100 belongs to the family of calcium binding proteins. S100A and S100B proteins are two members of the S100 family. S100A is composed of an alpha and a beta chain whereas S100B is composed of two beta chains. This antibody is specific against an epitope located on the alpha-chain (i.e. in S-100A and S-100B) but not on the beta-chain of S-100 (i.e. in S-100B). This antibody can be used to localize S-100A in various tissue sections. S-100 protein has been found in normal melanocytes, Langerhans cells, histiocytes, chondrocytes, lipocytes, skeletal and cardiac muscle, epithelial and myoepithelial cells of the breast, salivary and sweat glands. Neoplasms derived from these cells also express S-100 protein. Almost all malignant melanomas and cases of histiocytosis X are positive for S-100 protein.

---

**Limitations and Warranty**

This antibody is available for research use only and is not approved for use in diagnosis. There are no warranties, expressed or implied, which extend beyond this description. Company is not liable for any personal injury or economic loss resulting from this product.

---

**Supplied As**

200ug/ml of Ab purified from Bioreactor Concentrate by Protein A/G. Prepared in 10mM PBS with 0.05% BSA & 0.05% azide. Also available WITHOUT BSA & azide at 1.0mg/ml.

---

**Storage and Stability**

Antibody with azide - store at 2 to 8°C. Antibody without azide - store at -20 to -80°C. Antibody is stable for 24 months. Non-hazardous. No MSDS required.

---

**Research Areas**

Immunology, Infectious Disease

---