

## Protein Tyrosine Phosphatase, non-receptor type 6 Antibody

Mouse Monoclonal Antibody [Clone PTPN6/7544]

Catalog No	Format	Size
5777-MSM4-P0	Purified Ab with BSA and Azide at 200ug/ml	20 ug
5777-MSM4-P1	Purified Ab with BSA and Azide at 200ug/ml	100 ug
5777-MSM4-P1ABX	Purified Ab WITHOUT BSA and Azide at 1.0mg/ml	100 ug

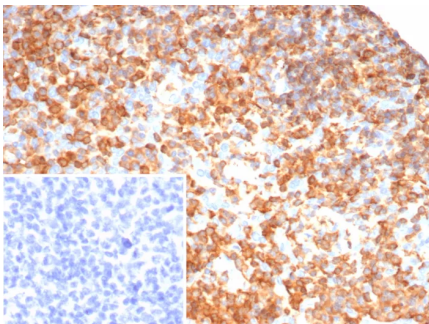
Applications	Tested Dillution	Note
Immunohistochemistry (IHC)	1-2ug/ml	30 min at RT. Staining of formalin-fixed tissues requires heating tissue sections in 10mM Tris with 1mM EDTA, pH 9.0, for 45 min at 95°C followed by cooling at RT for 20 minutes

### Product Details

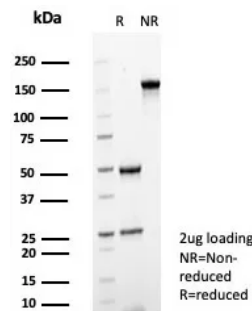
<b>Clone</b>	PTPN6/7544
<b>Gene Name</b>	PTPN6
<b>Immunogen</b>	Recombinant fragment (around aa395-595) of human PTPN6 protein (exact sequence is proprietary)
<b>Host</b>	Mouse
<b>Clonality</b>	Monoclonal
<b>Isotype / Light Chain</b>	IgG1 / Kappa
<b>Mol. Weight of Antigen</b>	65kDa
<b>Cellular Localization</b>	Cytoplasm. Nucleus. In neurons, translocates into the nucleus after treatment with angiotensin II.
<b>Species Reactivity</b>	Human
<b>Positive Control</b>	Human tonsil lymph node or spleen.

\*Optimal dilution for a specific application should be determined.

### Product Images for Protein Tyrosine Phosphatase, non-receptor type 6 Antibody



Formalin-fixed, paraffin-embedded human tonsil stained with PTPN6 Mouse Monoclonal Antibody (PTPN6/7544). Inset: PBS instead of primary antibody; secondary only negative control.



SDS-PAGE Analysis of Purified PTPN6 Mouse Monoclonal Antibody (PTPN6/7544) Confirmation of Purity and Integrity of Antibody.

### Specificity & Comments

PTPN6, which is also designated as SHP-1, is expressed primarily in hematopoietic cells and characterized by the presence of two SH2 domains N-terminal to the PTP domain. It maps to 12p13, a region commonly involved in leukemia-associated chromosomal abnormalities. SHP-1 plays a role in modulating intracellular signaling for various molecules. In T-cell lymphomas and other malignancies, SHP-1 phosphatase expression is lost, by a thus far undetermined mechanism. Preliminary studies suggest that it may be helpful in differentiating mantle/marginal zone lymphomas (SHP-1+) from follicular lymphomas (SHP-1 negative).

### Supplied As

200ug/ml of Ab purified from Bioreactor Concentrate by Protein A/G. Prepared in 10mM PBS with 0.05% BSA & 0.05% azide. Also available WITHOUT BSA & azide at 1.0mg/ml.

### Storage and Stability

Antibody with azide - store at 2 to 8°C. Antibody without azide - store at -20 to -80°C. Antibody is stable for 24 months. Non-hazardous. No MSDS required.

### Research Areas

Immunology, CTLA-4 blockade immunotherapy, Cytokine Signaling, Infectious Disease, Nuclear Marker, Signal Transduction

## Limitations and Warranty

This antibody is available for research use only and is not approved for use in diagnosis. There are no warranties, expressed or implied, which extend beyond this description. Company is not liable for any personal injury or economic loss resulting from this product.

---