

## SATB2 (Colorectal Carcinoma Marker) Antibody

Mouse Monoclonal Antibody [Clone SATB2/7488]

Catalog No	Format	Size
23314-MSM15-P0	Purified Ab with BSA and Azide at 200ug/ml	20 ug
23314-MSM15-P1	Purified Ab with BSA and Azide at 200ug/ml	100 ug
23314-MSM15-P1ABX	Purified Ab WITHOUT BSA and Azide at 1.0mg/ml	100 ug

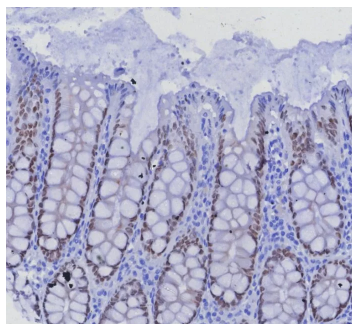
Applications	Tested Dillution	Note
Immunohistochemistry (IHC)	1-2ug/ml	30 min at RT. Staining of formalin-fixed tissues requires heating tissue sections in 10mM Tris with 1mM EDTA, pH 9.0, for 45 min at 95°C followed by cooling at RT for 20 minutes

### Product Details

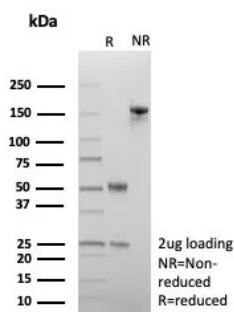
Clone	SATB2/7488
Gene Name	SATB2
Immunogen	Recombinant fragment (around aa150-350) of human SATB2 protein (exact sequence is proprietary)
Host	Mouse
Clonality	Monoclonal
Isotype / Light Chain	IgG1 / Kappa
Mol. Weight of Antigen	83kDa
Cellular Localization	Nucleus.
Species Reactivity	Human
Positive Control	Human colon or cerebral cortex tissue.

\*Optimal dilution for a specific application should be determined.

### Product Images for SATB2 (Colorectal Carcinoma Marker) Antibody



IHC analysis of formalin-fixed, paraffin-embedded human colon carcinoma. Strong nuclear staining using SATB2/7488 at 2ug/ml in PBS for 30min RT. Inset: PBS instead of primary antibody; secondary only negative control.



SDS-PAGE Analysis Purified SATB2 Mouse Monoclonal Antibody (SATB2/7488). Confirmation of Purity and Integrity of Antibody.

**Specificity & Comments**

SATB2 is a DNA binding protein that specifically binds nuclear matrix attachment regions. It is involved in transcription regulation and chromatin remodeling. SATB2 expression in colorectal carcinomas (CRC) is correlated with good prognosis and in laryngeal squamous cell carcinoma it functions as a tumor suppressor wherein loss of expression is positively correlated with high tumor grade and recurrence. Moreover, SATB2, in combination with CK20, could identify almost all CRC s. Upper gastrointestinal (GI) carcinomas and pancreatic ductal carcinomas are usually negative for SATB2, and ovarian carcinomas, lung adenocarcinomas, and adenocarcinomas from other origin are rarely positive for SATB2. Additionally, SATB2 antibody can identify neuroendocrine neoplasms of colon and rectum because SATB2 is usually negative in neuroendocrine neoplasms of the GI tract, pancreas, and lung. More recently, it has been reported that SATB2 is a sensitive marker for tumors with osteoblastic differentiation.

---

**Limitations and Warranty**

This antibody is available for research use only and is not approved for use in diagnosis. There are no warranties, expressed or implied, which extend beyond this description. Company is not liable for any personal injury or economic loss resulting from this product.

---

**Supplied As**

200ug/ml of Ab purified from Bioreactor Concentrate by Protein A/G. Prepared in 10mM PBS with 0.05% BSA & 0.05% azide. Also available WITHOUT BSA & azide at 1.0mg/ml.

---

**Storage and Stability**

Antibody with azide - store at 2 to 8°C. Antibody without azide - store at -20 to -80°C. Antibody is stable for 24 months. Non-hazardous. No MSDS required.

---

**Research Areas**

Cardiovascular, Nuclear Marker, Transcription Factors

---