

LAMP5 (Late Endosomes Marker) Antibody

Mouse Monoclonal Antibody [Clone LAMP5/7642]

Catalog No	Format	Size
24141-MSM2-P0	Purified Ab with BSA and Azide at 200ug/ml	20 ug
24141-MSM2-P1	Purified Ab with BSA and Azide at 200ug/ml	100 ug
24141-MSM2-P1ABX	Purified Ab WITHOUT BSA and Azide at 1.0mg/ml	100 ug

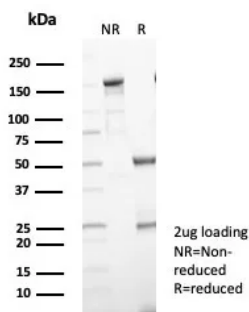
Applications	Tested Dillution	Note
Immunohistochemistry (IHC)	1-2ug/ml	30 min at RT. Staining of formalin-fixed tissues requires heating tissue sections in 10mM Tris with 1mM EDTA, pH 9.0, for 45 min at 95°C followed by cooling at RT for 20 minutes
Western Blot (WB)	2-4ug/ml	

Product Details

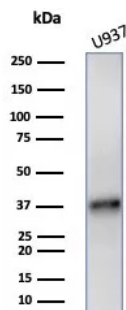
Clone	LAMP5/7642
Gene Name	LAMP5
Immunogen	Recombinant full-length human LAMP5 protein
Host	Mouse
Clonality	Monoclonal
Isotype / Light Chain	IgG2 / Kappa
Mol. Weight of Antigen	27/31 kDa
Cellular Localization	Cell Surface. Lysosome.
Species Reactivity	Human
Positive Control	Human brain.

*Optimal dilution for a specific application should be determined.

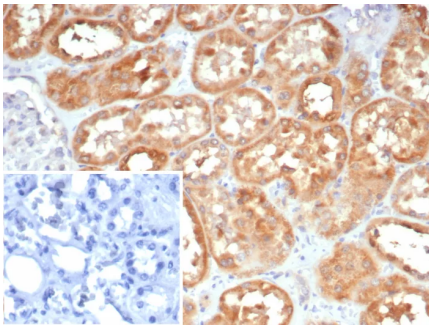
Product Images for LAMP5 (Late Endosomes Marker) Antibody



SDS-PAGE Analysis of Purified LAMP5 Mouse Monoclonal Antibody (LAMP5/7642). Confirmation of Purity and Integrity of Antibody.



Western blot analysis of U937 cell lysate using LAMP5 Mouse Monoclonal Antibody (LAMP5/7642).



Formalin-fixed, paraffin-embedded human kidney stained with LAMP5 Mouse Monoclonal Antibody (LAMP5/7642). Inset: PBS instead of primary antibody; secondary only negative control.

Specificity & Comments

Lysosome-associated membrane proteins (LAMP) are glycosylated type I membrane proteins that play a role in the biogenesis of the pigment melanin. LAMP-5, also known as C20orf103, is a 280 amino acid protein that belongs to the LAMP family and is mainly found in cytoplasmic vesicles of the neuronal cell body. LAMP-5 is up-regulated upon CpG activation and down-regulated up Toll-like receptor (TLR) ligands.

Limitations and Warranty

This antibody is available for research use only and is not approved for use in diagnosis. There are no warranties, expressed or implied, which extend beyond this description. Company is not liable for any personal injury or economic loss resulting from this product.

Supplied As

200ug/ml of Ab purified from Bioreactor Concentrate by Protein A/G. Prepared in 10mM PBS with 0.05% BSA & 0.05% azide. Also available WITHOUT BSA & azide at 1.0mg/ml.

Storage and Stability

Antibody with azide - store at 2 to 8°C. Antibody without azide - store at -20 to -80°C. Antibody is stable for 24 months. Non-hazardous. No MSDS required.
