

## Langerin / CD207 (Marker of Langerhans Cells) Antibody

Mouse Monoclonal Antibody [Clone LGRN/7429]

| Catalog No       | Format  | Size   |
|------------------|---|--------|
| 50489-MSM9-P0    | Purified Ab with BSA and Azide at 200ug/ml    | 20 ug  |
| 50489-MSM9-P1    | Purified Ab with BSA and Azide at 200ug/ml    | 100 ug |
| 50489-MSM9-P1ABX | Purified Ab WITHOUT BSA and Azide at 1.0mg/ml | 100 ug |

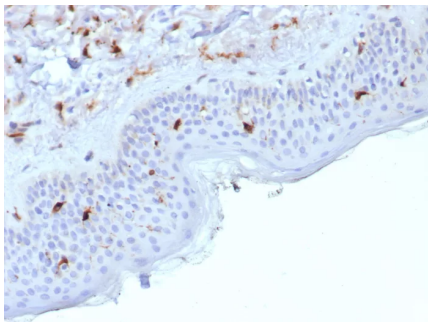
| Applications               | Tested Dillution | Note  |
|----------------------------|------------------|---|
| Immunohistochemistry (IHC) | 1-2ug/ml         | 30 min at RT. Staining of formalin-fixed tissues requires heating tissue sections in 10mM Tris with 1mM EDTA, pH 9.0, for 45 min at 95°C followed by cooling at RT for 20 minutes |

### Product Details

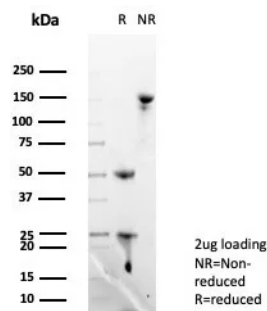
|                               |  |
|-------------------------------|--|
| <b>Clone</b>                  | LGRN/7429  |
| <b>Gene Name</b>              | CD207  |
| <b>Immunogen</b>              | Recombinant fragment (around aa50-250) of human Langerin protein (exact sequence is proprietary) |
| <b>Host</b>                   | Mouse  |
| <b>Clonality</b>              | Monoclonal   |
| <b>Isotype / Light Chain</b>  | IgG  |
| <b>Mol. Weight of Antigen</b> | 48kDa  |
| <b>Cellular Localization</b>  | Cell Surface. Cytoplasm.   |
| <b>Species Reactivity</b>     | Human  |
| <b>Positive Control</b>       | Human skin.  |

\*Optimal dilution for a specific application should be determined.

### Product Images for Langerin / CD207 (Marker of Langerhans Cells) Antibody



Formalin-fixed, paraffin-embedded human skin stained with Langerin Mouse Monoclonal Antibody (LGRN/7429). HIER: Tris/EDTA, pH9.0, 45min. 2°C: HRP-polymer, 30min. DAB, 5min.



SDS-PAGE Analysis of Purified Langerin Mouse Monoclonal Antibody (LGRN/7429). Confirmation of Purity and Integrity of Antibody.

### Specificity & Comments

Langerhans cells (LCs) are a subset of immature dendritic cells (DCs) that specifically localize in the epidermis and other mucosal epithelia. Epidermal LCs possess strong immuno-stimulatory capacity and play a central role in the initiation and regulation of immune responses. Langerin (CD207) is a Ca<sup>2+</sup>-dependent, C-type lectin domain containing, type II transmembrane protein that induces epidermal LCs to differentiate into Birbeck granules (BG). BGs are organelles with superimposing and zipper membranes that influence proper class I type antigen presentation to the circulating T cells. Human spleen, lymph node, thymus, liver, lung and heart express Langerin protein.

### Supplied As

200ug/ml of Ab purified from Bioreactor Concentrate by Protein A/G. Prepared in 10mM PBS with 0.05% BSA & 0.05% azide. Also available WITHOUT BSA & azide at 1.0mg/ml.

### Storage and Stability

Antibody with azide - store at 2 to 8°C. Antibody without azide - store at -20 to -80°C. Antibody is stable for 24 months. Non-hazardous. No MSDS required.

### Research Areas

Immunology, Dendritic Cell Marker

## Limitations and Warranty

This antibody is available for research use only and is not approved for use in diagnosis. There are no warranties, expressed or implied, which extend beyond this description. Company is not liable for any personal injury or economic loss resulting from this product.

---