

## IL20RA (Interleukin 20 Receptor Subunit Alpha) Antibody

Mouse Monoclonal Antibody [Clone IL20RA/1752]

Catalog No	Format	Size
53832-MSM2-P0	Purified Ab with BSA and Azide at 200ug/ml	20 ug
53832-MSM2-P1	Purified Ab with BSA and Azide at 200ug/ml	100 ug
53832-MSM2-P1ABX	Purified Ab WITHOUT BSA and Azide at 1.0mg/ml	100 ug

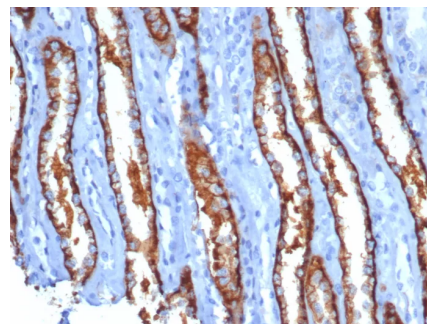
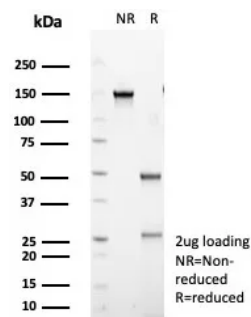
Applications	Tested Dillution	Note
Immunohistochemistry (IHC)	1-2ug/ml	30 min at RT. Staining of formalin-fixed tissues requires heating tissue sections in 10mM Tris with 1mM EDTA, pH 9.0, for 45 min at 95°C followed by cooling at RT for 20 minutes

### Product Details

<b>Clone</b>	IL20RA/1752
<b>Gene Name</b>	IL20RA
<b>Immunogen</b>	Recombinant fragment (around aa1-200) of human IL20RA protein (exact sequence is proprietary)
<b>Host</b>	Mouse
<b>Clonality</b>	Monoclonal
<b>Isotype / Light Chain</b>	IgG2 / Kappa
<b>Mol. Weight of Antigen</b>	90-100kDa
<b>Cellular Localization</b>	Cell surface.
<b>Species Reactivity</b>	Human
<b>Positive Control</b>	brain or psoriatic skin. Human skin testis

\*Optimal dilution for a specific application should be determined.

### Product Images for IL20RA (Interleukin 20 Receptor Subunit Alpha) Antibody



SDS-PAGE Analysis of Purified IL20RA Mouse Monoclonal Antibody (IL20RA/1752). Confirmation of Purity and Integrity of Antibody.

Formalin-fixed, paraffin-embedded human kidney stained with IL20RA Mouse Monoclonal Antibody (IL20RA/1752). HIER: Tris/EDTA, pH9.0, 45min. 2°C: HRP-polymer, 30min. DAB, 5min.

### **Specificity & Comments**

The class II cytokine receptor family includes 12 members, 11 of which combine as various heterodimers to transduce signals across the cellular membrane for 27 cytokines. These cytokines are divided into four structurally related groups: six cytokines of the IL-10 family, 17 type I IFNs, one type II IFN and three IFN- $\gamma$ . IL-20 is a member of the IL-10 family of cytokines that has been shown to be upregulated in psoriatic skin. The receptor for IL-20 (IL-20R) exists as a dimer consisting of IL-20Ra and IL-20Rb. IL-20R also functions as a receptor for IL-19, IL-24 and IL-26. It is highly expressed in skin, brain and testis. IL-20, IL-20Ra and IL-20Rb all have higher expression levels in psoriatic lesional (LS) skin than in nonlesional (NL) skin, suggesting a role for these proteins as potential therapeutic targets. IL-20 can induce signal transducer and activator of transcription (Stat) activation through IL-20R.

---

### **Limitations and Warranty**

This antibody is available for research use only and is not approved for use in diagnosis. There are no warranties, expressed or implied, which extend beyond this description. Company is not liable for any personal injury or economic loss resulting from this product.

---

### **Supplied As**

200ug/ml of Ab purified from Bioreactor Concentrate by Protein A/G. Prepared in 10mM PBS with 0.05% BSA & 0.05% azide. Also available WITHOUT BSA & azide at 1.0mg/ml.

---

### **Storage and Stability**

Antibody with azide - store at 2 to 8°C. Antibody without azide - store at -20 to -80°C. Antibody is stable for 24 months. Non-hazardous. No MSDS required.

---

### **Research Areas**

Immunology, AKT Signaling, Cytokine Signaling

---