

SFMBT2 Antibody

Mouse Monoclonal Antibody [Clone PCRP-SFMBT2-2E12]

Catalog No	Format	Size
57713-MSM3-P0	Purified Ab with BSA and Azide at 200ug/ml	20 ug
57713-MSM3-P1	Purified Ab with BSA and Azide at 200ug/ml	100 ug
57713-MSM3-P1ABX	Purified Ab WITHOUT BSA and Azide at 1.0mg/ml	100 ug

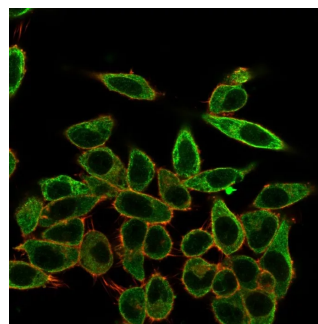
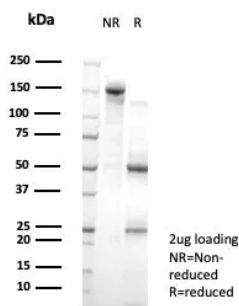
Applications	Tested Dillution	Note
Flow Cytometry (Flow)	1-2ug/million cells	
Immunofluorescence (IF)	1-3ug/ml	

Product Details

Clone	PCR-P-SFMBT2-2E12
Gene Name	SFMBT2
Immunogen	Recombinant full-length human SFMBT2 protein
Host	Mouse
Clonality	Monoclonal
Isotype / Light Chain	IgG2c
Mol. Weight of Antigen	100Da
Cellular Localization	Nucleus.
Species Reactivity	Human
Positive Control	HeLa or MCF-7 cells.

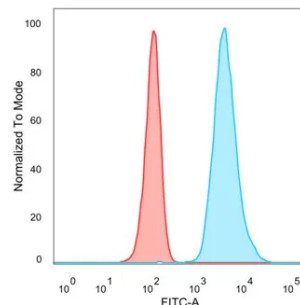
*Optimal dilution for a specific application should be determined.

Product Images for SFMBT2 Antibody



SDS-PAGE Analysis of Purified SFMBT2 Mouse Monoclonal Antibody (PCR-P-SFMBT2-2E12) Confirmation of Purity and Integrity of Antibody.

Immunofluorescence Analysis of PFA-fixed HeLa cells stained using SFMBT2 Mouse Monoclonal Antibody (PCR-P-SFMBT2-2E12) followed by goat anti-mouse IgG-CF488 (green). CF640R phalloidin (red).



Analysis of Protein Array containing more than 19,000 full-length human proteins using SFMBT2 Mouse Monoclonal Antibody (PCRP-SFMBT2-2E12). Z- and S- Score: The Z-score represents the strength of a signal that a monoclonal antibody (MAb) (in combination with a fluorescently-tagged anti-IgG secondary antibody) produces when binding to a particular protein on the HuProt™ array. Z-scores are described in units of standard deviations (SD's) above the mean value of all signals generated on that array. If targets on HuProt™ are arranged in descending order of the Z-score, the S-score is the difference (also in units of SD's) between the Z-score. S-score therefore represents the relative target specificity of a MAb to its intended target. A MAb is considered to be specific to its intended target, if the MAb has an S-score of at least 2.5. For example, if a MAb binds to protein X with a Z-score of 43 and to protein Y with a Z-score of 14, then the S-score for the binding of that MAb to protein X is equal to 29.

Flow Cytometric Analysis of PFA-fixed HeLa cells. SFMBT2 Mouse Monoclonal Antibody (PCRP-SFMBT2-2E12) followed by goat anti-mouse IgG-CF488 (blue); unstained cells (red).

Specificity & Comments

The SFMBT2 (Scm-like with four MBT domains 2) gene shares high similarity with the Drosophila Scm (sex comb on midleg) gene. Sfmbt2 is a Polycomb group (PcG) gene that maps to the proximal region of Chromosome 2, and is a putative imprinted gene. Sfmbt2 is the first imprinted gene within this region to be identified. Studies indicate that six different translocations involving proximal chromosome 2 results in lethality when present as a maternal uniparental duplication.

Supplied As

200ug/ml of Ab purified from Bioreactor Concentrate by Protein A/G. Prepared in 10mM PBS with 0.05% BSA & 0.05% azide. Also available WITHOUT BSA & azide at 1.0mg/ml.

Storage and Stability

Antibody with azide - store at 2 to 8°C. Antibody without azide - store at -20 to -80°C. Antibody is stable for 24 months. Non-hazardous. No MSDS required.

Limitations and Warranty

This antibody is available for research use only and is not approved for use in diagnosis. There are no warranties, expressed or implied, which extend beyond this description. Company is not liable for any personal injury or economic loss resulting from this product.