

S100A13 (S100 Calcium Binding Protein A13) Antibody

Mouse Monoclonal Antibody [Clone S100A13/7484]

Catalog No	Format	Size
6284-MSM4-P0	Purified Ab with BSA and Azide at 200ug/ml	20 ug
6284-MSM4-P1	Purified Ab with BSA and Azide at 200ug/ml	100 ug
6284-MSM4-P1ABX	Purified Ab WITHOUT BSA and Azide at 1.0mg/ml	100 ug

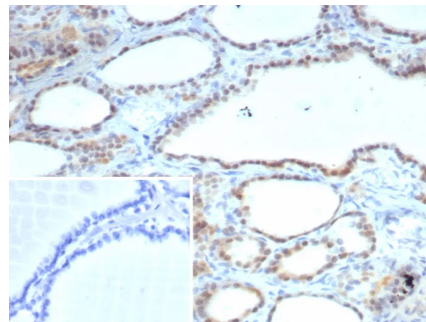
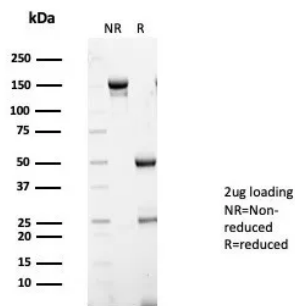
Applications	Tested Dillution	Note
Immunohistochemistry (IHC)	1-2ug/ml	30 min at RT. Staining of formalin-fixed tissues requires heating tissue sections in 10mM Tris with 1mM EDTA, pH 9.0, for 45 min at 95°C followed by cooling at RT for 20 minutes

Product Details

Clone	S100A13/7484
Gene Name	S100A13
Immunogen	Recombinant fragment (around aa1-93) of human S100A13 protein (exact sequence is proprietary)
Host	Mouse
Clonality	Monoclonal
Isotype / Light Chain	IgG2 / Kappa
Mol. Weight of Antigen	10kDa
Cellular Localization	Cytoplasm. Secreted.
Species Reactivity	Human
Positive Control	Monocytes and lymphocytes.

*Optimal dilution for a specific application should be determined.

Product Images for S100A13 (S100 Calcium Binding Protein A13) Antibody



SDS-PAGE Analysis of Purified S100A13 Mouse Monoclonal Antibody (S100A13/7484). Confirmation of Purity and Integrity of Antibody.

Formalin-fixed, paraffin-embedded human thyroid stained with S100A13 Mouse Monoclonal Antibody (S100A13/7484). Inset: PBS instead of primary antibody; secondary only negative control.

Specificity & Comments

The S-100 protein family consists of a group of calcium-binding proteins, that exhibit cell and tissue-specific expression. The expression levels of its members differ in various pathological conditions. The extracellular functions of the S-100 family may include the ability to enhance neurite outgrowth, involvement in inflammation and motility of tumor cells. S-100A13 is a 98 amino acid protein with 2 EF-hand calcium-binding domains. High levels of S-100A13 mRNA are present in skeletal muscle, heart, kidney, ovary, small intestine and pancreas. S-100A13 translocates in response to elevated intracellular calcium levels induced by Angiotensin II. S-100A13 co-localizes with S-100A1 on human chromosome 1q21.3, the site where the majority of S-100 proteins cluster.

Limitations and Warranty

This antibody is available for research use only and is not approved for use in diagnosis. There are no warranties, expressed or implied, which extend beyond this description. Company is not liable for any personal injury or economic loss resulting from this product.

Supplied As

200ug/ml of Ab purified from Bioreactor Concentrate by Protein A/G. Prepared in 10mM PBS with 0.05% BSA & 0.05% azide. Also available WITHOUT BSA & azide at 1.0mg/ml.

Storage and Stability

Antibody with azide - store at 2 to 8°C. Antibody without azide - store at -20 to -80°C. Antibody is stable for 24 months. Non-hazardous. No MSDS required.

Research Areas

Endothelial Cell Marker
