

Recombinant Osteopontin (OSP) / Secreted Phosphoprotein 1 (SPP1) Antibody

Mouse Monoclonal Antibody [Clone rOSP/8856]

Catalog No	Format	Size
6696-MSM4-P0	Purified Ab with BSA and Azide at 200ug/ml	20 ug
6696-MSM4-P1	Purified Ab with BSA and Azide at 200ug/ml	100 ug
6696-MSM4-P1ABX	Purified Ab WITHOUT BSA and Azide at 1.0mg/ml	100 ug

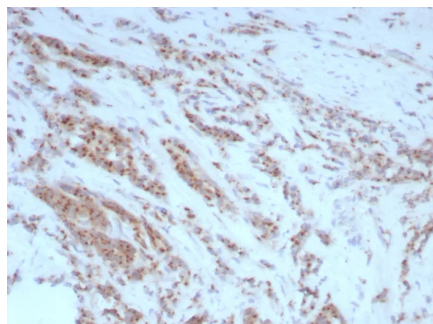
Applications	Tested Dillution	Note
Immunohistochemistry (IHC)	1-2ug/ml	30 min at RT. Staining of formalin-fixed tissues requires heating tissue sections in 10mM Tris with 1mM EDTA, pH 9.0, for 45 min at 95°C followed by cooling at RT for 20 minutes

Product Details

Clone	rOSP/8856
Gene Name	SPP1
Immunogen	Recombinant full-length rat Spp1 protein
Host	Mouse
Clonality	Monoclonal
Isotype / Light Chain	IgG1 / Kappa
Mol. Weight of Antigen	34.9kDa
Cellular Localization	Secreted.
Species Reactivity	Human
Positive Control	Bone. Found in plasma.

*Optimal dilution for a specific application should be determined.

Product Images for Recombinant Osteopontin (OSP) / Secreted Phosphoprotein 1 (SPP1) Antibody



Formalin-fixed, paraffin-embedded human prostate stained with Osteopontin Recombinant Mouse Monoclonal Antibody (rOSP/8856). HIER: Tris/EDTA, pH9.0, 45min. 2°C: HRP-polymer, 30min. DAB, 5min.

Specificity & Comments

Osteopontin is a bone matrix protein and a cytokine secreted by activated T cells. Osteopontin (OPN, also designated bone sialoprotein 1, urinary stone protein, spp-1, \hat{I} $\hat{?}$ -1, nephropontin, uropontin) is an extracellular matrix cell adhesion phosphoglycoprotein. OPN is deposited into unmineralized matrix prior to calcification leading to localization at various tissue interfaces including cement lines, lamina limitans, and between collagen fibrils of fully matured hard tissues. While OPN is a major product of osteoblasts, it is also synthesized by brain and kidney cells. OPNs isolated from or secreted by various tissues have molecular weights due to post-translational modifications. OPN functions as a substrate for transglutaminase and is involved in cell adhesion, chemoattraction and immunomodulation.

Supplied As

200ug/ml of Ab purified from Bioreactor Concentrate by Protein A/G. Prepared in 10mM PBS with 0.05% BSA & 0.05% azide. Also available WITHOUT BSA & azide at 1.0mg/ml.

Storage and Stability

Antibody with azide - store at 2 to 8°C. Antibody without azide - store at -20 to -80°C. Antibody is stable for 24 months. Non-hazardous. No MSDS required.

Research Areas

Cardiovascular, Complement System, Mesenchymal Stem Cell Differentiation, Signal Transduction, Transcription Factors

Limitations and Warranty

This antibody is available for research use only and is not approved for use in diagnosis. There are no warranties, expressed or implied, which extend beyond this description. Company is not liable for any personal injury or economic loss resulting from this product.
