

TMPRSS2 (Transmembrane Serine Protease 2) Antibody

Mouse Monoclonal Antibody [Clone TMPRSS2/7420]

Catalog No	Format	Size
7113-MSM2-P0	Purified Ab with BSA and Azide at 200ug/ml	20 ug
7113-MSM2-P1	Purified Ab with BSA and Azide at 200ug/ml	100 ug
7113-MSM2-P1ABX	Purified Ab WITHOUT BSA and Azide at 1.0mg/ml	100 ug

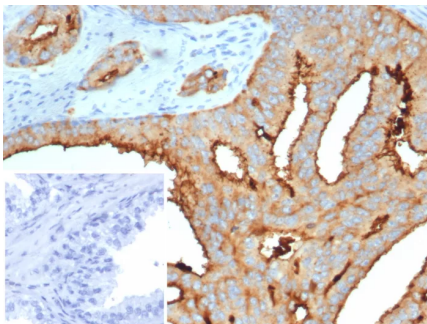
Applications	Tested Dillution	Note
Immunohistochemistry (IHC)	1-2ug/ml	30 min at RT. Staining of formalin-fixed tissues requires heating tissue sections in 10mM Tris with 1mM EDTA, pH 9.0, for 45 min at 95°C followed by cooling at RT for 20 minutes

Product Details

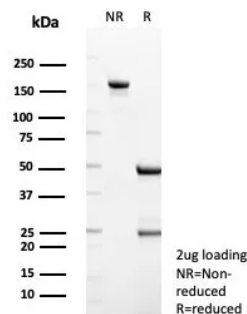
Clone	TMPRSS2/7420
Gene Name	TMPRSS2
Immunogen	Recombinant full-length human TMPRSS2 protein (exact sequence is proprietary)
Host	Mouse
Clonality	Monoclonal
Isotype / Light Chain	IgG1 / Kappa
Mol. Weight of Antigen	70kDa
Cellular Localization	Secreted. Cell Surface.
Species Reactivity	Human
Positive Control	colon Expressed strongly in small intestine. Also expressed in prostate stomach and salivary gland.

*Optimal dilution for a specific application should be determined.

Product Images for TMPRSS2 (Transmembrane Serine Protease 2) Antibody



Formalin-fixed, paraffin-embedded human prostate stained with TMPRSS2 Mouse Monoclonal Antibody (TMPRSS2/7420). Inset: PBS instead of primary antibody; secondary only negative control.



SDS-PAGE Analysis of Purified TMPRSS2 Mouse Monoclonal Antibody (TMPRSS2/7420). Confirmation of Purity and Integrity of Antibody.

Specificity & Comments

Extracellular proteases mediate the digestion of neighboring extracellular matrix components in initial tumor growth, allow desquamation of tumor cells into the surrounding environment, provide the basis for invasion of basement membranes in targeted metastatic organs and are required for release and activation of many growth and angiogenic factors. The TMPRSS2 gene encodes a 492 amino acid multimeric serine protease, which is mainly expressed in the mouse prostate and kidney, and is also expressed in the human small intestine, prostate, colon, stomach and salivary gland. TMPRSS2 contains several domains, including a serine protease domain of the S1 family, a scavenger receptor cysteine-rich domain of group A, an LDL receptor class A domain and a transmembrane domain. TMPRSS2 is expressed as a full length form and a cleaved protease domain and its expression is increased by androgenic hormones. TMPRSS2 is also expressed in prostate carcinoma, suggesting that it may play a role in prostate carcinogenesis.

Limitations and Warranty

This antibody is available for research use only and is not approved for use in diagnosis. There are no warranties, expressed or implied, which extend beyond this description. Company is not liable for any personal injury or economic loss resulting from this product.

Supplied As

200ug/ml of Ab purified from Bioreactor Concentrate by Protein A/G. Prepared in 10mM PBS with 0.05% azide. Also available WITHOUT azide at 1.0mg/ml.

Storage and Stability

Antibody with azide - store at 2 to 8°C. Antibody without azide - store at -20 to -80°C. Antibody is stable for 24 months. Non-hazardous. No MSDS required.

Research Areas

Infectious Disease
