

LIN28A (Transcription Factor) Antibody

Mouse Monoclonal Antibody [Clone PCR-P-LIN28A-1E2]

Catalog No	Format	Size
79727-MSM1-P0	Purified Ab with BSA and Azide at 200ug/ml	20 ug
79727-MSM1-P1	Purified Ab with BSA and Azide at 200ug/ml	100 ug
79727-MSM1-P1ABX	Purified Ab WITHOUT BSA and Azide at 1.0mg/ml	100 ug

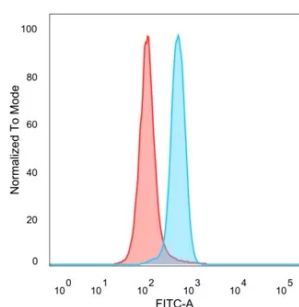
Applications	Tested Dillution	Note
Flow Cytometry (Flow)	1-2ug/million cells	

Product Details

Clone	PCR-P-LIN28A-1E2
Gene Name	LIN28A
Immunogen	Recombinant fragment (around aa134-187) of human LIN28A protein
Host	Mouse
Clonality	Monoclonal
Isotype / Light Chain	IgG2a
Mol. Weight of Antigen	22.74kDa
Cellular Localization	Nucleus.
Species Reactivity	Human
Positive Control	HeLa or U87 cells.

*Optimal dilution for a specific application should be determined.

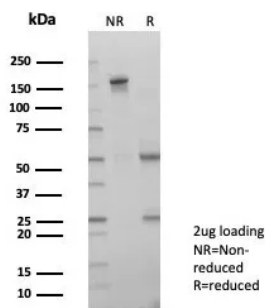
Product Images for LIN28A (Transcription Factor) Antibody



Flow cytometric analysis of PFA-fixed HeLa cells. LIN28A Mouse Monoclonal Antibody (PCR-P-LIN28A-1E2) followed by goat anti-mouse IgG-CF488 (blue), unstained cells (red).



Analysis of Protein Array containing more than 19,000 full-length human proteins using LIN28A Mouse Monoclonal Antibody (PCR-P-LIN28A-1E2). Z- and S- Score: The Z-score represents the strength of a signal that a monoclonal antibody (MAb) (in combination with a fluorescently-tagged anti-IgG secondary antibody) produces when binding to a particular protein on the HuProt™ array. Z-scores are described in units of standard deviations (SD's) above the mean value of all signals generated on that array. If targets on HuProt™ are arranged in descending order of the Z-score, the S-score is the difference (also in units of SD's) between the Z-score. S-score therefore represents the relative target specificity of a MAb to its intended target. A MAb is considered to be specific to its intended target, if the MAb has an S-score of at least 2.5. For example, if a MAb binds to protein X with a Z-score of 43 and to protein Y with a Z-score of 14, then the S-score for the binding of that MAb to protein X is equal to 29.



SDS-PAGE Analysis of Purified LIN28A Mouse Monoclonal Antibody (PCRP-LIN28A-1E2). Confirmation of Purity and Integrity of Antibody.

Specificity & Comments

LIN-28 is a highly conserved, RNA-binding, cytoplasmic protein. It consists of a cold shock domain and retroviral-type (CCHC) zinc finger motifs that were first identified in *Caenorhabditis elegans*. LIN-28 controls the timing of events during embryonic development and is readily expressed in embryos, embryonic stem cells and embryonal carcinoma cells. The presence of LIN-28 persists in some adult tissues including cardiac and skeletal muscle. In differentiating myoblasts, LIN-28 increases protein synthesis efficiency and binds to the growth and differentiation factor IGF-II.

Limitations and Warranty

This antibody is available for research use only and is not approved for use in diagnosis. There are no warranties, expressed or implied, which extend beyond this description. Company is not liable for any personal injury or economic loss resulting from this product.

Supplied As

200ug/ml of Ab purified from Bioreactor Concentrate by Protein A/G. Prepared in 10mM PBS with 0.05% BSA & 0.05% azide. Also available WITHOUT BSA & azide at 1.0mg/ml.

Storage and Stability

Antibody with azide - store at 2 to 8°C. Antibody without azide - store at -20 to -80°C. Antibody is stable for 24 months. Non-hazardous. No MSDS required.

Research Areas

Developmental Biology, Stem Cell Differentiation