

SIGLEC10 Antibody

Mouse Monoclonal Antibody [Clone SIGLEC10/7581]

Catalog No	Format	Size
89790-MSM1-P0	Purified Ab with BSA and Azide at 200ug/ml	20 ug
89790-MSM1-P1	Purified Ab with BSA and Azide at 200ug/ml	100 ug
89790-MSM1-P1ABX	Purified Ab WITHOUT BSA and Azide at 1.0mg/ml	100 ug

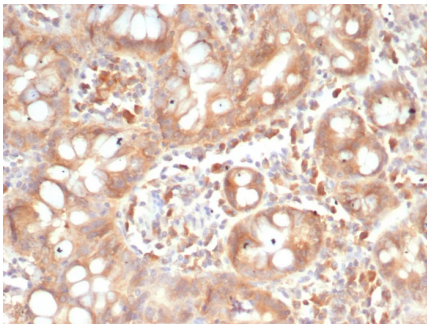
Applications	Tested Dillution	Note
Immunohistochemistry (IHC)	1-2ug/ml	30 min at RT. Staining of formalin-fixed tissues requires heating tissue sections in 10mM Tris with 1mM EDTA, pH 9.0, for 45 min at 95°C followed by cooling at RT for 20 minutes

Product Details

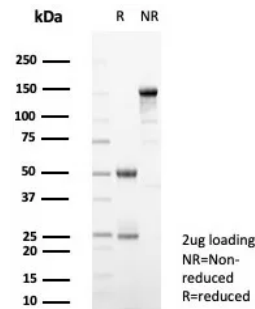
Clone	SIGLEC10/7581
Gene Name	SIGLEC10
Immunogen	Recombinant fragment (around aa500-697) of human SIGLEC10 protein (exact sequence is proprietary)
Host	Mouse
Clonality	Monoclonal
Isotype / Light Chain	IgG2 / Kappa
Mol. Weight of Antigen	77kDa
Cellular Localization	Cell surface. Secreted.
Species Reactivity	Human
Positive Control	Expressed by peripheral blood leukocytes (eosinophils lung monocytes and a natural killer cell subpopulation). Isoform 5 is found in lymph node ovary and appendix. Isoform 1 is found at high levels and isoform 2 at lower levels in bone marrow spleen a

*Optimal dilution for a specific application should be determined.

Product Images for SIGLEC10 Antibody



Formalin-fixed, paraffin-embedded human small intestine stained with SIGLEC10 Mouse Monoclonal Antibody (SIGLEC10/7581). HIER: Tris/EDTA, pH9.0, 45min. 2°C: HRP-polymer, 30min. DAB, 5min.



SDS-PAGE Analysis of Purified SIGLEC10 Mouse Monoclonal Antibody (SIGLEC10/7581). Confirmation of Purity and Integrity of Antibody.

Specificity & Comments

Siglec-10 (sialic acid-binding Ig-like lectin 10) is a 697 amino acid protein belonging to the immunoglobulin superfamily. The N-terminal Ig-like domain of Siglec-10 contains a sialic acid-binding site and the C-terminal cytoplasmic region of Siglec-10 contains two immunoreceptor tyrosine-based inhibitor motifs (ITIMs), which are involved in the modulation of cellular responses through SH2 domains. With most expression in spleen, bone marrow and peripheral blood lymphocytes, such as monocytes, natural killer cells and eosinophils, it is likely that Siglec-10 functions as an inhibitory receptor in the immune response. Importantly, Siglec-10 mRNA is found to be highly upregulated in eosinophils at sites of inflammation in asthmatics, suggesting that Siglec-10 may be an appropriate target for new approaches of immunomodulatory therapy. There are six named isoforms of Siglec-10 that are a result of alternative splicing. All isoforms exist as single-pass transmembrane proteins, except for isoform 6, which is secreted.

Limitations and Warranty

This antibody is available for research use only and is not approved for use in diagnosis. There are no warranties, expressed or implied, which extend beyond this description. Company is not liable for any personal injury or economic loss resulting from this product.

Supplied As

200ug/ml of Ab purified from Bioreactor Concentrate by Protein A/G. Prepared in 10mM PBS with 0.05% BSA & 0.05% azide. Also available WITHOUT BSA & azide at 1.0mg/ml.

Storage and Stability

Antibody with azide - store at 2 to 8°C. Antibody without azide - store at -20 to -80°C. Antibody is stable for 24 months. Non-hazardous. No MSDS required.

Research Areas

Immunology
