

Pan-Cadherin Antibody

Mouse Monoclonal Antibody [Clone Pan-CAD/8019]

Catalog No	Format	Size
MSM1-8019-P0	Purified Ab with BSA and Azide at 200ug/ml	20 ug
MSM1-8019-P1	Purified Ab with BSA and Azide at 200ug/ml	100 ug
MSM1-8019-P1ABX	Purified Ab WITHOUT BSA and Azide at 1.0mg/ml	100 ug

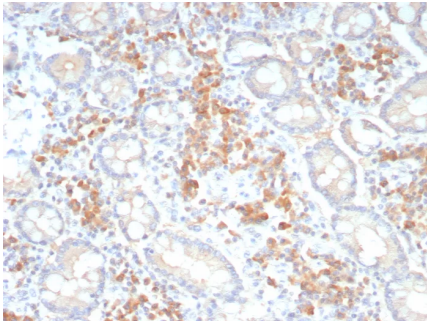
Applications	Tested Dillution	Note
Immunohistochemistry (IHC)	1-2ug/ml	30 min at RT. Staining of formalin-fixed tissues requires heating tissue sections in 10mM Tris with 1mM EDTA, pH 9.0, for 45 min at 95°C followed by cooling at RT for 20 minutes

Product Details

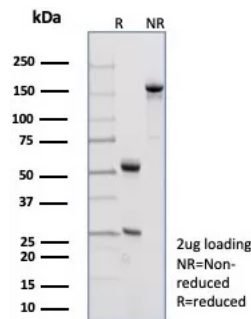
Clone	Pan-CAD/8019
Gene Name	CDH1
Immunogen	Recombinant fragment of human C-terminal of Pan-Cadherin (exact sequence is proprietary)
Host	Mouse
Clonality	Monoclonal
Isotype / Light Chain	IgG2b / Kappa
Mol. Weight of Antigen	120 kDa
Cellular Localization	Cell membrane
Species Reactivity	Human
Positive Control	colon Human heart prostate or brain.

*Optimal dilution for a specific application should be determined.

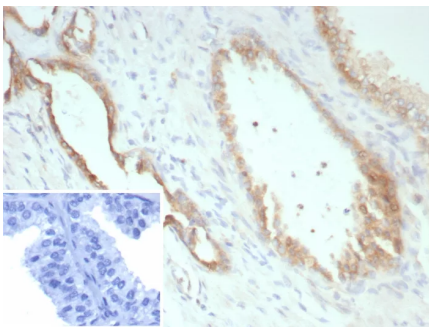
Product Images for Pan-Cadherin Antibody



Formalin-fixed, paraffin-embedded human colon stained with Pan-Cadherin Mouse Monoclonal Antibody (Pan-CAD/8019). HIER: Tris/EDTA, pH9.0, 45min. 2°C: HRP-polymer, 30min. DAB, 5min.



SDS-PAGE Analysis of Purified Pan-Cadherin Mouse Monoclonal Antibody (Pan-CAD/8019). Confirmation of Integrity and Purity of Antibody.



Formalin-fixed, paraffin-embedded human prostate carcinoma stained with Pan-Cadherin Mouse Monoclonal Antibody (Pan-CAD/8019). Inset: PBS instead of primary antibody; secondary only negative control.

Specificity & Comments

Cadherins comprise a family of Ca^{2+} -dependent adhesion molecules that function to mediate cell-cell binding critical to the maintenance of tissue structure and morphogenesis. The classical cadherins, E-, N- and P-cadherin, consist of large extracellular domains characterized by a series of five homologous NH₂ terminal repeats. The most distal of these cadherins is thought to be responsible for binding specificity, transmembrane domains and carboxy terminal intracellular domains. The relatively short intracellular domains interact with a variety of cytoplasmic proteins, such as β -catenin, to regulate cadherin function. Members of this family of adhesion proteins include rat cadherin K (and its human homolog, cadherin 6), R-cadherin, B-cadherin, E/P cadherin and cadherin-5.

Limitations and Warranty

This antibody is available for research use only and is not approved for use in diagnosis. There are no warranties, expressed or implied, which extend beyond this description. Company is not liable for any personal injury or economic loss resulting from this product.

Supplied As

200ug/ml of Ab purified from Bioreactor Concentrate by Protein A/G. Prepared in 10mM PBS with 0.05% BSA & 0.05% azide. Also available WITHOUT BSA & azide at 1.0mg/ml.

Storage and Stability

Antibody with azide - store at 2 to 8°C. Antibody without azide - store at -20 to -80°C. Antibody is stable for 24 months. Non-hazardous. No MSDS required.

Research Areas

Immunology, Bladder Cancer, Colon Cancer, Infectious Disease, Signal Transduction
