

Recombinant Human Nuclear Antigen (HNA) (Human Cell Marker) Antibody

Rabbit Monoclonal Antibody [Clone 235-1R]

| Catalog No | Format | Size |
|-----------------|---|--------|
| RBM8-8775-P0 | Purified Ab with BSA and Azide at 200ug/ml | 20 ug |
| RBM8-8775-P1 | Purified Ab with BSA and Azide at 200ug/ml | 100 ug |
| RBM8-8775-P1ABX | Purified Ab WITHOUT BSA and Azide at 1.0mg/ml | 100 ug |

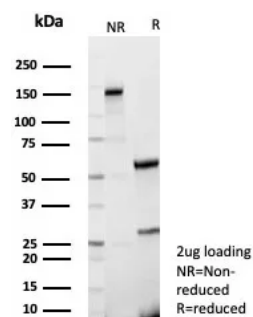
| Applications | Tested Dillution | Note |
|----------------------------|------------------|---|
| Immunohistochemistry (IHC) | 1-2ug/ml | 30 min at RT. Staining of formalin-fixed tissues requires heating tissue sections in 10mM Tris with 1mM EDTA, pH 9.0, for 45 min at 95°C followed by cooling at RT for 20 minutes |

Product Details

| | |
|-------------------------------|---|
| Clone | 235-1R |
| Gene Name | |
| Immunogen | Nuclei of human myeloid leukemia biopsy cells |
| Host | Rabbit |
| Clonality | Monoclonal |
| Isotype / Light Chain | IgG / Kappa |
| Mol. Weight of Antigen | 70kDa & 80kDa |
| Cellular Localization | Nucleus. |
| Species Reactivity | Human |
| Positive Control | All human cells. Human tonsil. |

*Optimal dilution for a specific application should be determined.

Product Images for Recombinant Human Nuclear Antigen (HNA) (Human Cell Marker) Antibody



SDS-PAGE Analysis of Purified HuNu Recombinant Rabbit Monoclonal Antibody (235-1R). Confirmation of Purity and Integrity of Antibody.

Specificity & Comments

This monoclonal antibody is an excellent marker for human cells in xenographic model research. It reacts specifically with human cells. It is a part of a new panel of reagents, which recognizes subcellular organelles or compartments of human cells. These markers may be useful in identification of these organelles in cells, tissues, and biochemical preparations. MAb 235-1R recognizes an antigen associated with the nuclei in human cells. It can be used to stain the nuclei in cell or tissue preparations and can be used as a nuclear marker in subcellular fractions. It produces a speckled pattern in normal and malignant cells and may be used to stain the nuclei of cells in fixed or frozen tissue sections. It can also be used with paraformaldehyde fixed frozen tissue or cell preparations.

Limitations and Warranty

This antibody is available for research use only and is not approved for use in diagnosis. There are no warranties, expressed or implied, which extend beyond this description. Company is not liable for any personal injury or economic loss resulting from this product.

2 Union Square, Union City, CA 94587, Tel: 1-866-2-NEOBIO (1-866-263-6246)
orders@NeoBiotechnologies.com, www.NeoBiotechnologies.com

Supplied As

200ug/ml of Ab produced in CHO cell mammalian-based expression system. Prepared in 10mM PBS with 0.05% BSA & 0.05% azide. Also available WITHOUT BSA & azide at 1.0mg/ml.

Storage and Stability

Antibody with azide - store at 2 to 8°C. Antibody without azide - store at -20 to -80°C. Antibody is stable for 24 months. Non-hazardous. No MSDS required.