

ALDH1L1 Antibody

Mouse Monoclonal Antibody [Clone ALDH1L1/7969]

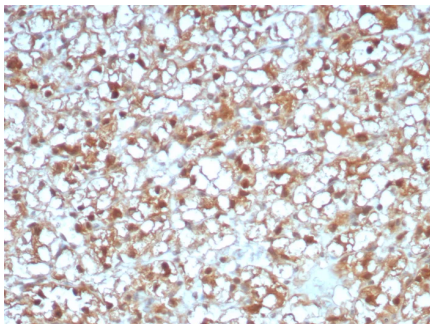
Catalog No	Format	Size
10840-MSM7-P0	Purified Ab with BSA and Azide at 200ug/ml	20 ug
10840-MSM7-P1	Purified Ab with BSA and Azide at 200ug/ml	100 ug
10840-MSM7-P1ABX	Purified Ab WITHOUT BSA and Azide at 1.0mg/ml	100 ug

Applications	Tested Dillution	Note
Immunohistochemistry (IHC)	1-2ug/ml	30 min at RT. Staining of formalin-fixed tissues requires heating tissue sections in 10mM Tris with 1mM EDTA, pH 9.0, for 45 min at 95°C followed by cooling at RT for 20 minutes

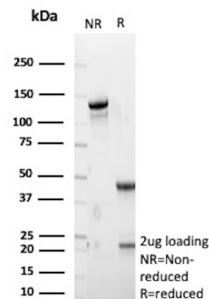
Product Details	
Clone	ALDH1L1/7969
Gene Name	ALDH1L1
Immunogen	Recombinant fragment of human ALDH1L1 protein (exact sequence is proprietary)
Host	Mouse
Clonality	Monoclonal
Isotype / Light Chain	IgG2 / Kappa
Mol. Weight of Antigen	99kDa
Cellular Localization	Cytoplasm.
Species Reactivity	Human
Positive Control	Human kidney or liver.

*Optimal dilution for a specific application should be determined.

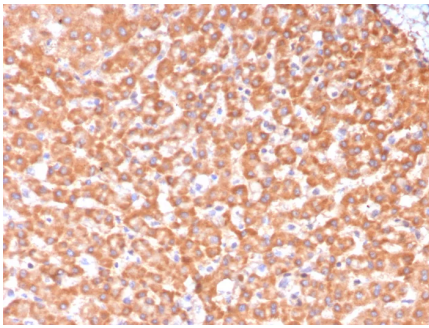
Product Images for ALDH1L1 Antibody



Formalin-fixed, paraffin-embedded human renal cell carcinoma stained with ADH1L1 Mouse Monoclonal Antibody (ALDH1L1/7969). HIER: Tris/EDTA, pH9.0, 45min. 2°C: HRP-polymer, 30min. DAB, 5min.



SDS-PAGE Analysis of Purified ALDH1L1 Mouse Monoclonal Antibody (ALDH1L1/7969). Confirmation of Purity and Integrity of Antibody.



Formalin-fixed, paraffin-embedded human hepatocellular carcinoma stained with ADH1L1 Mouse Monoclonal Antibody (ALDH1L1/7969). HIER: Tris/EDTA, pH9.0, 45min. 2°C; HRP-polymer, 30min. DAB, 5min.

Specificity & Comments

Aldehyde dehydrogenases (ALDHs) mediate NADP⁺-dependent oxidation of aldehydes into acids during detoxification of alcohol-derived acetaldehyde, lipid peroxidation and metabolism of corticosteroids, biogenic amines and neurotransmitters. ALDH1L1 (aldehyde dehydrogenase 1 family member L1), also known as FTHFD or 10-FTHFD (10-formyltetrahydrofolate dehydrogenase), is a cytosolic protein that is developmentally regulated in the cerebellum. ALDH1L1 binds to folate and catalyzes the conversion of 10-formyltetrahydrofolate (10-FTHF) to tetrahydrofolate (THF). This suggests a possible role for ALDH1L1 in the regulation of cellular THF levels as well as in the inhibition of cell proliferation (as 10-FTHF is essential for the synthesis of purine). In addition, the overexpression of ALDH1L1 can restrict cell proliferation in vitro.

Limitations and Warranty

This antibody is available for research use only and is not approved for use in diagnosis. There are no warranties, expressed or implied, which extend beyond this description. Company is not liable for any personal injury or economic loss resulting from this product.

Supplied As

200ug/ml of Ab purified from Bioreactor Concentrate by Protein A/G. Prepared in 10mM PBS with 0.05% BSA & 0.05% azide. Also available WITHOUT BSA & azide at 1.0mg/ml.

Storage and Stability

Antibody with azide - store at 2 to 8°C. Antibody without azide - store at -20 to -80°C. Antibody is stable for 24 months. Non-hazardous. No MSDS required.

Research Areas

Cardiovascular