

## Recombinant Collagen II (COL2A1) Antibody

Rabbit Monoclonal Antibody [Clone COL2A1/8810R]

Catalog No	Format	Size
1280-RBM4-P0	Purified Ab with BSA and Azide at 200ug/ml	20 ug
1280-RBM4-P1	Purified Ab with BSA and Azide at 200ug/ml	100 ug
1280-RBM4-P1ABX	Purified Ab WITHOUT BSA and Azide at 1.0mg/ml	100 ug

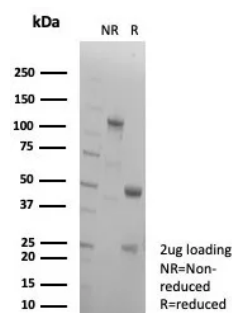
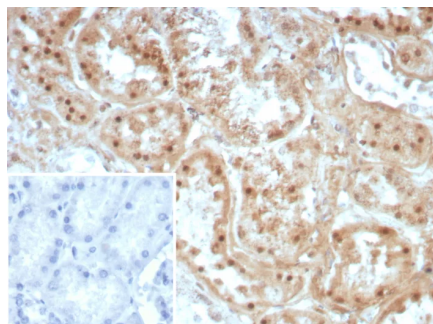
Applications	Tested Dillution	Note
Immunohistochemistry (IHC)	1-2ug/ml	30 min at RT. Staining of formalin-fixed tissues requires heating tissue sections in 10mM Tris with 1mM EDTA, pH 9.0, for 45 min at 95°C followed by cooling at RT for 20 minutes

### Product Details

Clone	COL2A1/8810R
Gene Name	COL2A1
Immunogen	bovine collagen type II (CII).
Host	Rabbit
Clonality	Monoclonal
Isotype / Light Chain	IgG / Kappa
Mol. Weight of Antigen	190kDa
Cellular Localization	Secreted. Extracellular matrix.
Species Reactivity	Human
Positive Control	Human cartilage lung or eye.

\*Optimal dilution for a specific application should be determined.

### Product Images for Recombinant Collagen II (COL2A1) Antibody



Formalin-fixed, paraffin-embedded human kidney stained with COL2A1 Recombinant Rabbit Monoclonal Antibody (COL2A1/8810R). Inset: PBS instead of primary antibody; secondary only negative control.

SDS-PAGE Analysis of Purified COL2A1 Recombinant Rabbit Monoclonal Antibody (COL2A1/8810R). Confirmation of Purity and Integrity of Antibody.

### **Specificity & Comments**

The extensive family of COL gene products (collagens) is composed of several chain types, including fibril-forming interstitial collagens (types I, II, III and V) and basement membrane collagens (type IV), each type containing multiple isoforms. Collagens are fibrous, extracellular matrix proteins with high tensile strength and are the major components of connective tissue, such as tendons and cartilage. All collagens contain a triple helix domain and frequently show lateral self-association in order to form complex connective tissues. Several collagens also play a role in cell adhesion, important for maintaining normal tissue architecture and function. In cartilage, Collagen Type II constitutes the bulk of the fibril. Sensitization with Collagen Type II induces an erosive polyarthritis in rats, mice and higher primates which can resemble rheumatoid arthritis and relapsing polychondritis.

---

### **Limitations and Warranty**

This antibody is available for research use only and is not approved for use in diagnosis. There are no warranties, expressed or implied, which extend beyond this description. Company is not liable for any personal injury or economic loss resulting from this product.

---

### **Supplied As**

200ug/ml of Ab purified from Bioreactor Concentrate by Protein A/G. Prepared in 10mM PBS with 0.05% BSA & 0.05% azide. Also available WITHOUT BSA & azide at 1.0mg/ml.

---

### **Storage and Stability**

Antibody with azide - store at 2 to 8°C. Antibody without azide - store at -20 to -80°C. Antibody is stable for 24 months. Non-hazardous. No MSDS required.

---

### **Research Areas**

Cardiovascular, Developmental Biology, Immunology, Articular Cartilage Extracellular Matrix, Mesenchymal Stem Cell Differentiation, Nuclear Marker, Signal Transduction

---