

Recombinant Desmoglein-3 (Squamous Cell Marker) Antibody

Mouse Monoclonal Antibody [Clone rDSG3/8612]

Catalog No	Format	Size
1830-MSM14-P0	Purified Ab with BSA and Azide at 200ug/ml	20 ug
1830-MSM14-P1	Purified Ab with BSA and Azide at 200ug/ml	100 ug
1830-MSM14-P1ABX	Purified Ab WITHOUT BSA and Azide at 1.0mg/ml	100 ug

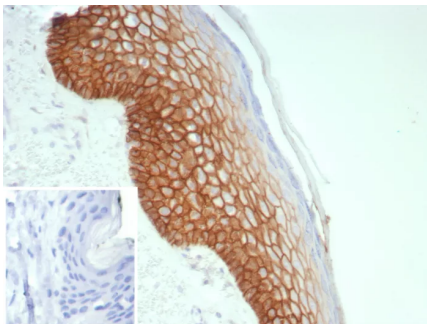
Applications	Tested Dillution	Note
Immunohistochemistry (IHC)	1-2ug/ml	30 min at RT. Staining of formalin-fixed tissues requires heating tissue sections in 10mM Tris with 1mM EDTA, pH 9.0, for 45 min at 95°C followed by cooling at RT for 20 minutes

Product Details

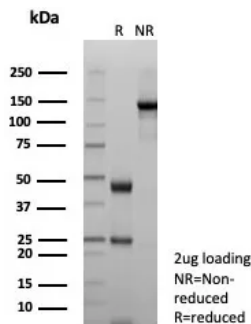
Clone	rDSG3/8612
Gene Name	DSG3
Immunogen	Recombinant fragment (around aa300-500) of human DSG3 protein (exact sequence is proprietary)
Host	Mouse
Clonality	Monoclonal
Isotype / Light Chain	IgG1 / Kappa
Mol. Weight of Antigen	130kDa
Cellular Localization	Cell surface
Species Reactivity	Human
Positive Control	A431 cells. Lung squamous cell carcinoma.

*Optimal dilution for a specific application should be determined.

Product Images for Recombinant Desmoglein-3 (Squamous Cell Marker) Antibody



Formalin-fixed, paraffin-embedded human skin stained with Desmoglein-3 Recombinant Mouse Monoclonal Antibody (rDSG3/8612). Inset: PBS instead of primary antibody; secondary only negative control.



SDS-PAGE Analysis of Purified Desmoglein-3 Recombinant Mouse Monoclonal Antibody (rDSG3/8612). Confirmation of Integrity and Purity of Antibody.

Specificity & Comments

Recognizes a protein of 130kDa, identified as Desmoglein-3 (DSG3). This MAbs is highly specific to Desmoglein-3 and does not cross-react with other members of the Desmoglein-family. DSG3 is a calcium-binding transmembrane glycoprotein component of desmosomes in vertebrate epithelial cells. Desmosomes are cell-cell junctions between epithelial, myocardial, and certain other cell types. Currently, three desmoglein subfamily members are identified and all are members of the cadherin cell adhesion molecule superfamily.

Supplied As

200ug/ml of Ab purified from Bioreactor Concentrate by Protein A/G. Prepared in 10mM PBS with 0.05% BSA & 0.05% azide. Also available WITHOUT BSA & azide at 1.0mg/ml.

Storage and Stability

Antibody with azide - store at 2 to 8°C. Antibody without azide - store at -20 to -80°C. Antibody is stable for 24 months. Non-hazardous. No MSDS required.

Research Areas

Developmental Biology

Limitations and Warranty

This antibody is available for research use only and is not approved for use in diagnosis. There are no warranties, expressed or implied, which extend beyond this description. Company is not liable for any personal injury or economic loss resulting from this product.
