

## Recombinant NSE gamma (Neuron Specific Enolase, gamma) (Neuroendocrine Marker) Antibody

Rabbit Monoclonal Antibody [Clone ENO/8632R]

Catalog No	Format	Size
2026-RBM21-P0	Purified Ab with BSA and Azide at 200ug/ml	20 ug
2026-RBM21-P1	Purified Ab with BSA and Azide at 200ug/ml	100 ug
2026-RBM21-P1ABX	Purified Ab WITHOUT BSA and Azide at 1.0mg/ml	100 ug

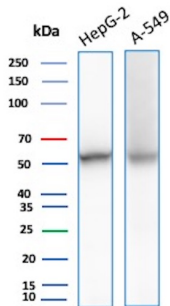
Applications	Tested Dillution	Note
Immunohistochemistry (IHC)	1-2ug/ml	30 min at RT. Staining of formalin-fixed tissues requires heating tissue sections in 10mM Tris with 1mM EDTA, pH 9.0, for 45 min at 95°C followed by cooling at RT for 20 minutes
Western Blot (WB)	2-4ug/ml	

### Product Details

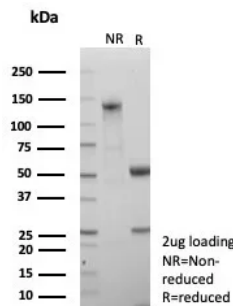
<b>Clone</b>	ENO/8632R
<b>Gene Name</b>	ENO2
<b>Immunogen</b>	Recombinant fragment of human NSE gamma (around aa416-433) (exact sequence is proprietary)
<b>Host</b>	Rabbit
<b>Clonality</b>	Monoclonal
<b>Isotype / Light Chain</b>	IgG / Kappa
<b>Mol. Weight of Antigen</b>	~50kDa
<b>Cellular Localization</b>	Cytoplasm.
<b>Species Reactivity</b>	Human
<b>Positive Control</b>	cerebellum or pheochromocytoma. Jurkat, HepG2, A-549 cells. Human pancreas

\*Optimal dilution for a specific application should be determined.

### Product Images for Recombinant NSE gamma (Neuron Specific Enolase, gamma) (Neuroendocrine Marker) Antibody



Western Blot Analysis of HepG2, A-549 cell lysate using ENO2 Recombinant Rabbit Monoclonal Antibody (ENO/8632R).



SDS-PAGE Analysis of Purified NSE gamma Recombinant Rabbit Monoclonal Antibody (ENO/8632R). Confirmation of Purity and Integrity of Antibody.

### **Specificity & Comments**

This monoclonal antibody recognizes a protein of about 50kDa, which is identified as gamma-enolase. Three isoenzymes of enolases are identified, alpha, beta and gamma. Alpha-isoform is expressed in most tissues, whereas beta-form is expressed predominantly in muscle tissue whereas gamma-enolase is found only in nervous tissue. These isoforms exist as both homodimers and heterodimers, and they play a role in converting phosphoglyceric acid to phosphoenolpyruvic acid in the glycolytic pathway. NSE-gamma is a useful marker to identify peripheral nerves and tumors of neuro-endocrine origins, such as pheochromocytomas. It is usually employed in combination with other markers such as Synaptophysin, Chromogranin A, and Neurofilament.

### **Limitations and Warranty**

This antibody is available for research use only and is not approved for use in diagnosis. There are no warranties, expressed or implied, which extend beyond this description. Company is not liable for any personal injury or economic loss resulting from this product.

### **Supplied As**

200ug/ml of Ab purified from Bioreactor Concentrate by Protein A/G. Prepared in 10mM PBS with 0.05% BSA & 0.05% azide. Also available WITHOUT BSA & azide at 1.0mg/ml.

### **Storage and Stability**

Antibody with azide - store at 2 to 8°C. Antibody without azide - store at -20 to -80°C. Antibody is stable for 24 months. Non-hazardous. No MSDS required.

### **Research Areas**

Cardiovascular, Neuroscience, Mast Cell Marker