

GBP1 Antibody

Mouse Monoclonal Antibody [Clone GBP1/7617]

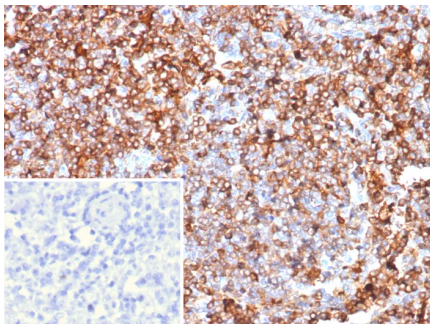
Catalog No	Format	Size
2633-MSM1-P0	Purified Ab with BSA and Azide at 200ug/ml	20 ug
2633-MSM1-P1	Purified Ab with BSA and Azide at 200ug/ml	100 ug
2633-MSM1-P1ABX	Purified Ab WITHOUT BSA and Azide at 1.0mg/ml	100 ug

Applications	Tested Dillution	Note
Immunohistochemistry (IHC)	1-2ug/ml	30 min at RT. Staining of formalin-fixed tissues requires heating tissue sections in 10mM Tris with 1mM EDTA, pH 9.0, for 45 min at 95°C followed by cooling at RT for 20 minutes

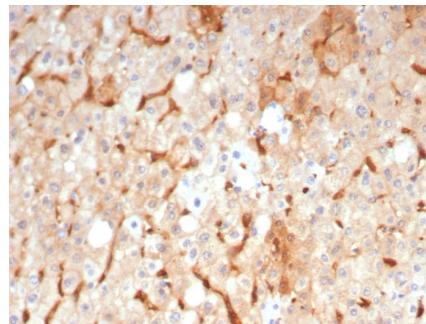
Product Details	
Clone	GBP1/7617
Gene Name	GBP1
Immunogen	Recombinant fragment (around aa400-592) of human GBP1 protein (exact sequence is proprietary)
Host	Mouse
Clonality	Monoclonal
Isotype / Light Chain	IgG1 / Kappa
Mol. Weight of Antigen	67kDa
Cellular Localization	Cell membrane
Species Reactivity	Human
Positive Control	Human colon or cerebral cortex tissue.

*Optimal dilution for a specific application should be determined.

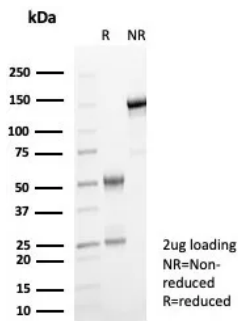
Product Images for GBP1 Antibody



IHC analysis of formalin-fixed, paraffin-embedded human lymph node. GBP1 Mouse Monoclonal Antibody (GBP1/7617). Inset: PBS instead of primary antibody; secondary only negative control.



IHC analysis of formalin-fixed, paraffin-embedded human liver. GBP1 Mouse Monoclonal Antibody (GBP1/7617). HIER: Tris/EDTA, pH9.0, 45min. 2°C: HRP-polymer, 30min. DAB, 5min.



SDS-PAGE Analysis Purified GBP1 Mouse Monoclonal Antibody (GBP1/7617).
Confirmation of Purity and Integrity of Antibody.

Specificity & Comments

GBP1 (guanylate binding protein 1) is a 592 amino acid protein member of the GTPase protein family and is able to bind specifically to guanine nucleotides such as GMP, GDP and GTP. GMP is hydrolyzed to GTP in two consecutive cleavage steps, both of which are carried out by GBP1. Localized to the cytoplasm, GBP1 is expressed in endothelial cells of the vascular system and is induced by IFN-g during macrophage induction. GBP1 is thought to regulate the expression of MMP-1, which mediates the proliferation and invasiveness of endothelial cells. GBP1 plays a key role in regulating inflammatory cytokines and provides protection against vesicular stomatitis and encephalomyocarditis viruses. GBP1 expression is highly induced in the vessels of skin diseases such as psoriasis and Kaposi's sarcoma, making it a novel cellular activation marker that characterizes inflammatory cytokines of endothelial cells.

Limitations and Warranty

This antibody is available for research use only and is not approved for use in diagnosis. There are no warranties, expressed or implied, which extend beyond this description. Company is not liable for any personal injury or economic loss resulting from this product.

Supplied As

200ug/ml of Ab purified from Bioreactor Concentrate by Protein A/G. Prepared in 10mM PBS with 0.05% BSA & 0.05% azide. Also available WITHOUT BSA & azide at 1.0mg/ml.

Storage and Stability

Antibody with azide - store at 2 to 8°C. Antibody without azide - store at -20 to -80°C. Antibody is stable for 24 months. Non-hazardous. No MSDS required.

Research Areas

Immunology, Cytokine Signaling