

Recombinant Interleukin-15 (IL-15) Antibody

Mouse Monoclonal Antibody [Clone rIL15/8049]

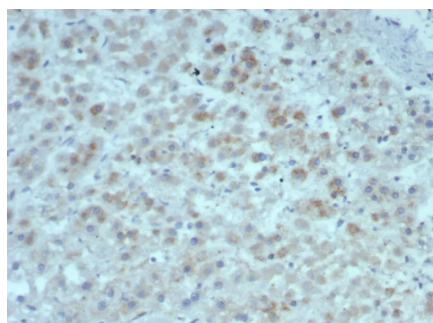
Catalog No	Format	Size
3600-MSM12-P0	Purified Ab with BSA and Azide at 200ug/ml	20 ug
3600-MSM12-P1	Purified Ab with BSA and Azide at 200ug/ml	100 ug
3600-MSM12-P1ABX	Purified Ab WITHOUT BSA and Azide at 1.0mg/ml	100 ug

Applications	Tested Dillution	Note
Immunohistochemistry (IHC)	1-2ug/ml	30 min at RT. Staining of formalin-fixed tissues requires heating tissue sections in 10mM Tris with 1mM EDTA, pH 9.0, for 45 min at 95°C followed by cooling at RT for 20 minutes

Product Details	
Clone	rIL15/8049
Gene Name	IL15
Immunogen	Recombinant fragment (around aa1-152) of human IL15 (exact sequence is proprietary)
Host	Mouse
Clonality	Monoclonal
Isotype / Light Chain	IgG1 / Kappa
Mol. Weight of Antigen	14-15kDa
Cellular Localization	Secreted. Cytoplasm. Nucleus.
Species Reactivity	Human
Positive Control	Human placenta skeletal muscle or adrenal gland.

*Optimal dilution for a specific application should be determined.

Product Images for Recombinant Interleukin-15 (IL-15) Antibody



Formalin-fixed, paraffin-embedded human adrenal gland stained with Interleukin-15 Recombinant Mouse Monoclonal Antibody (rIL15/8049). HIER: Tris/EDTA, pH9.0, 45min. 2°C: HRP-polymer, 30min. DAB, 5min.

Specificity & Comments

Interleukin-15 (IL-15), also designated IL-T, is a cloned cytokine which shares several biological activities but no sequence homology with IL-2. Human, mouse and simian IL-15 cDNA clones have been isolated and characterized. All 3 species encode a 162 amino acid residue precursor protein containing a 48 amino acid leader that is cleaved to generate the mature form of IL-15. IL-15 stimulates the proliferation of T cells and NK cells, while enhancing B cell expansion and antibody production. Unlike IL-2, IL-15 is not produced by lymphocytes, but appears to be produced by macrophages, epithelial lines, muscle and placenta. IL-15 has also been shown to be a chemoattractant for human blood T lymphocytes and to be able to induce lymphokine-activated killer (LAK) activity in NK cells as well as to be able to induce the generation of cytolytic effector cells. Studies have shown that IL-15 is the only other cytokine that shares the γ signaling subunit of the IL-2R. Evidence also suggests that like IL-2, IL-4 and IL-7, IL-15 utilizes the common IL-2R γ subunit.

Limitations and Warranty

This antibody is available for research use only and is not approved for use in diagnosis. There are no warranties, expressed or implied, which extend beyond this description. Company is not liable for any personal injury or economic loss resulting from this product.

Supplied As

200ug/ml of Ab purified from Bioreactor Concentrate by Protein A/G. Prepared in 10mM PBS with 0.05% BSA & 0.05% azide. Also available WITHOUT BSA & azide at 1.0mg/ml.

Storage and Stability

Antibody with azide - store at 2 to 8°C. Antibody without azide - store at -20 to -80°C. Antibody is stable for 24 months. Non-hazardous. No MSDS required.

Research Areas

AKT Signaling, Cardiovascular, Cytokine Signaling, Hematopoietic Stem Cells, Immunology, Nuclear Marker
