

Interleukin-15 (IL-15) Antibody

Mouse Monoclonal Antibody [Clone IL15/4696]

Catalog No	Format	Size
3600-MSM6-P0	Purified Ab with BSA and Azide at 200ug/ml	20 ug
3600-MSM6-P1	Purified Ab with BSA and Azide at 200ug/ml	100 ug
3600-MSM6-P1ABX	Purified Ab WITHOUT BSA and Azide at 1.0mg/ml	100 ug

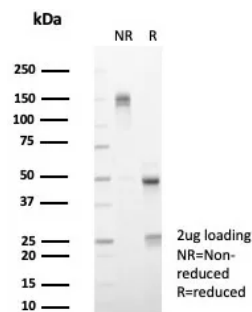
Applications	Tested Dillution	Note
Immunohistochemistry (IHC)	1-2ug/ml	30 min at RT. Staining of formalin-fixed tissues requires heating tissue sections in 10mM Tris with 1mM EDTA, pH 9.0, for 45 min at 95°C followed by cooling at RT for 20 minutes

Product Details

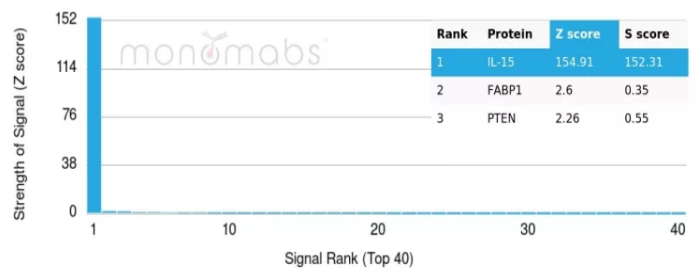
Clone	IL15/4696
Gene Name	IL15
Immunogen	Recombinant fragment of human IL15 (exact sequence is proprietary)
Host	Mouse
Clonality	Monoclonal
Isotype / Light Chain	IgG2 / Kappa
Mol. Weight of Antigen	14-15kDa
Cellular Localization	Secreted. Cytoplasm. Nucleus.
Species Reactivity	Human
Positive Control	Human placenta skeletal muscle or adrenal gland.

*Optimal dilution for a specific application should be determined.

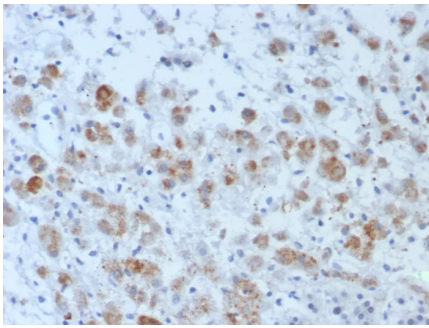
Product Images for Interleukin-15 (IL-15) Antibody



SDS-PAGE Analysis of Purified IL-15 Mouse Monoclonal Antibody (IL15/4696). Confirmation of Purity and Integrity of Antibody.



Analysis of Protein Array containing >19,000 full-length human proteins using Interleukin-15 (IL-15) Monospecific Mouse Monoclonal Antibody (IL15/4696). Z- and S-Score: The Z-score represents the strength of a signal that a monoclonal antibody (MAB) (in combination with a fluorescently-tagged anti-IgG secondary antibody) produces when binding to a particular protein on the HuProt™ array. Z-scores are described in units of standard deviations (SD's) above the mean value of all signals generated on that array. If targets on HuProt™ are arranged in descending order of the Z-score, the S-score is the difference (also in units of SD's) between the Z-score. S-score therefore represents the relative target specificity of a MAB to its intended target. A MAB is considered to be specific to its intended target, if the MAB has an S-score of at least 2.5. For example, if a MAB binds to protein X with a Z-score of 43 and to protein Y with a Z-score of 14, then the S-score for the binding of that MAB to protein X is equal to 29.



Formalin-fixed, paraffin-embedded human adrenal gland stained with Interleukin-15(IL-15) Mouse Monoclonal Antibody (IL15/4696). HIER: Tris/EDTA, pH9.0, 45min. 2°C: HRP-polymer, 30min. DAB, 5min.

Specificity & Comments

Interleukin-15 (IL-15), also designated IL-T, is a cloned cytokine which shares several biological activities but no sequence homology with IL-2. Human, mouse and simian IL-15 cDNA clones have been isolated and characterized. All 3 species encode a 162 amino acid residue precursor protein containing a 48 amino acid leader that is cleaved to generate the mature form of IL-15. IL-15 stimulates the proliferation of T cells and NK cells, while enhancing B cell expansion and antibody production. Unlike IL-2, IL-15 is not produced by lymphocytes, but appears to be produced by macrophages, epithelial lines, muscle and placenta. IL-15 has also been shown to be a chemoattractant for human blood T lymphocytes and to be able to induce lymphokine-activated killer (LAK) activity in NK cells as well as to be able to induce the generation of cytolytic effector cells. Studies have shown that IL-15 is the only other cytokine that shares the γ signaling subunit of the IL-2R. Evidence also suggests that like IL-2, IL-4 and IL-7, IL-15 utilizes the common IL-2R γ subunit.

Limitations and Warranty

This antibody is available for research use only and is not approved for use in diagnosis. There are no warranties, expressed or implied, which extend beyond this description. Company is not liable for any personal injury or economic loss resulting from this product.

Supplied As

200ug/ml of Ab purified from Bioreactor Concentrate by Protein A/G. Prepared in 10mM PBS with 0.05% BSA & 0.05% azide. Also available WITHOUT BSA & azide at 1.0mg/ml.

Storage and Stability

Antibody with azide - store at 2 to 8°C. Antibody without azide - store at -20 to -80°C. Antibody is stable for 24 months. Non-hazardous. No MSDS required.

Research Areas

Cardiovascular, Immunology, AKT Signaling, Cytokine Signaling, Hematopoietic Stem Cells, Nuclear Marker