

## Stathmin 1 / STMN1 Antibody

Mouse Monoclonal Antibody [Clone STMN1/8012]

Catalog No	Format	Size
3925-MSM2-P0	Purified Ab with BSA and Azide at 200ug/ml	20 ug
3925-MSM2-P1	Purified Ab with BSA and Azide at 200ug/ml	100 ug
3925-MSM2-P1ABX	Purified Ab WITHOUT BSA and Azide at 1.0mg/ml	100 ug

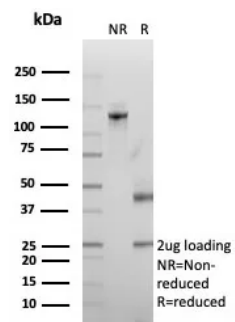
Applications	Tested Dillution	Note
Immunohistochemistry (IHC)	1-2ug/ml	30 min at RT. Staining of formalin-fixed tissues requires heating tissue sections in 10mM Tris with 1mM EDTA, pH 9.0, for 45 min at 95°C followed by cooling at RT for 20 minutes
Western Blot (WB)	2-4ug/ml	

### Product Details

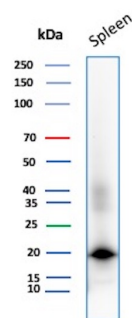
<b>Clone</b>	STMN1/8012
<b>Gene Name</b>	STMN1
<b>Immunogen</b>	Recombinant fragment of human STMN1 protein (exact sequence is proprietary)
<b>Host</b>	Mouse
<b>Clonality</b>	Monoclonal
<b>Isotype / Light Chain</b>	IgG1 / Kappa
<b>Mol. Weight of Antigen</b>	19kDa
<b>Cellular Localization</b>	Cytoplasm. Cytoskeleton.
<b>Species Reactivity</b>	Human
<b>Positive Control</b>	Human brain, Spleen or melanoma tissue.

\*Optimal dilution for a specific application should be determined.

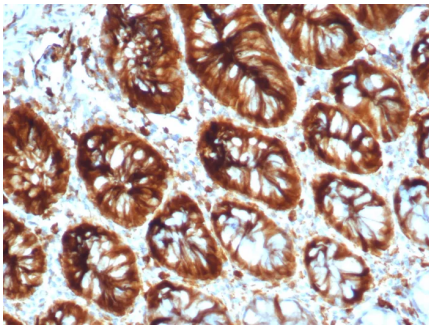
### Product Images for Stathmin 1 / STMN1 Antibody



SDS-PAGE Analysis of Purified Stathmin 1 Mouse Monoclonal Antibody (STMN1/8012). Confirmation of Purity and Integrity of Antibody.



Western Blot Analysis of Human Spleen tissue lysate using Stathmin1 Mouse Monoclonal Antibody (STMN1/8012)



Formalin-fixed, paraffin-embedded human colon stained with Stathmin 1 Mouse Monoclonal Antibody (STMN1/8012). HIER: Tris/EDTA, pH9.0, 45min. 2°C: HRP-polymer, 30min. DAB, 5min.

---

### Specificity & Comments

Op18 (for oncoprotein 18, also designated stathmin, prosolin or metablastin) is a conserved, Tubulin-associated, intracellular phosphoprotein. Many different phosphorylated forms of Op18 are observed, and it is expressed as two different isoforms. Op18 is considered a critical regulator of microtubulin dynamics and is downregulated by p53. It serves as a transducing protein, via phosphorylation, for a variety of cell signaling pathways and is involved in both mitosis and differentiation. Op18 is present in many cancers, including breast carcinomas, and is highly expressed in acute leukemias of different subtypes.

---

### Limitations and Warranty

This antibody is available for research use only and is not approved for use in diagnosis. There are no warranties, expressed or implied, which extend beyond this description. Company is not liable for any personal injury or economic loss resulting from this product.

---

### Supplied As

200ug/ml of Ab purified from Bioreactor Concentrate by Protein A/G. Prepared in 10mM PBS with 0.05% BSA & 0.05% azide. Also available WITHOUT BSA & azide at 1.0mg/ml.

---

### Storage and Stability

Antibody with azide - store at 2 to 8°C. Antibody without azide - store at -20 to -80°C. Antibody is stable for 24 months. Non-hazardous. No MSDS required.

---

### Research Areas

MAPK Signaling, Signal Transduction

---