

BRCA2 (Breast Marker) Antibody

Mouse Monoclonal Antibody [Clone BRCA2/2158]

Catalog No	Format	Size
675-MSM1-P0	Purified Ab with BSA and Azide at 200ug/ml	20 ug
675-MSM1-P1	Purified Ab with BSA and Azide at 200ug/ml	100 ug
675-MSM1-P1ABX	Purified Ab WITHOUT BSA and Azide at 1.0mg/ml	100 ug

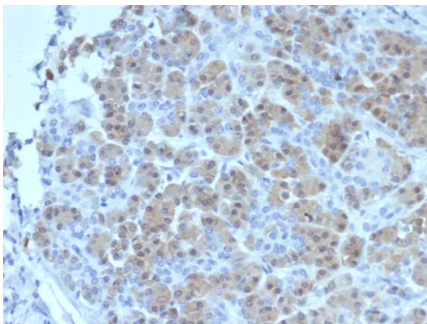
Applications	Tested Dillution	Note
Immunohistochemistry (IHC)	1-2ug/ml	30 min at RT. Staining of formalin-fixed tissues requires heating tissue sections in 10mM Tris with 1mM EDTA, pH 9.0, for 45 min at 95°C followed by cooling at RT for 20 minutes

Product Details

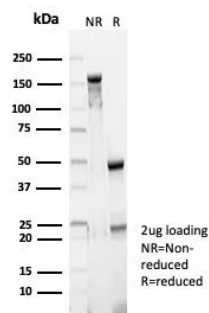
Clone	BRCA2/2158
Gene Name	BRCA2
Immunogen	Recombinant fragment (around aa 200-500) of human BRCA2 protein (exact sequence is proprietary)
Host	Mouse
Clonality	Monoclonal
Isotype / Light Chain	IgG1 / Kappa
Mol. Weight of Antigen	390kDa
Cellular Localization	Nucleus. Cytoplasm.
Species Reactivity	Human
Positive Control	A431 or HeLa cells. Human breast lung ovary or spleen. thymus

*Optimal dilution for a specific application should be determined.

Product Images for BRCA2 (Breast Marker) Antibody



Formalin-fixed, paraffin-embedded human salivary gland stained with BRCA2 Mouse Monoclonal Antibody (BRCA2/2158). HIER: Tris/EDTA, pH9.0, 45min. 2°C: HRP-polymer, 30min. DAB, 5min.



SDS-PAGE Analysis of Purified BRCA2 Mouse Monoclonal Antibody (BRCA2/2158). Confirmation of Integrity and Purity of Antibody.

Specificity & Comments

In 1990, a breast cancer susceptibility gene designated BRCA1 was localized to chromosome 17q. Mutations within this gene are believed to account for approximately 45% of families with high incidence of breast cancer and at least 80% of families with increased incidence of both early-onset breast cancer and ovarian cancer. A second breast cancer susceptibility gene, BRCA2 (breast cancer 2, early onset), located on chromosome 13q13.1, also confers a high incidence of breast cancer but, unlike BRCA1, does not confer a substantially elevated risk of ovarian cancer. Both BRCA1 and BRCA2 play a role in the maintenance of genome stability, particularly in the homologous recombination pathway for double-strand DNA repair. BRCA2 is regarded as a tumor suppressor gene; tumors with BRCA2 mutations exhibit loss of heterozygosity (LOH) of the wildtype allele. The protein encoded by the BRCA2 gene contains multiple copies of a 70 amino acid motif called the BRC motif. These motifs effect binding to the Rad51 recombinase, which operates in DNA repair.

Limitations and Warranty

This antibody is available for research use only and is not approved for use in diagnosis. There are no warranties, expressed or implied, which extend beyond this description. Company is not liable for any personal injury or economic loss resulting from this product.

Supplied As

200ug/ml of Ab purified from Bioreactor Concentrate by Protein A/G. Prepared in 10mM PBS with 0.05% BSA & 0.05% azide. Also available WITHOUT BSA & azide at 1.0mg/ml.

Storage and Stability

Antibody with azide - store at 2 to 8°C. Antibody without azide - store at -20 to -80°C. Antibody is stable for 24 months. Non-hazardous. No MSDS required.

Research Areas

Breast Cancer, Cardiovascular, Infectious Disease, Nuclear Marker
