

Recombinant CD3e (T-Cell Marker) Antibody

Mouse Monoclonal Antibody [Clone rC3e/8881]

Catalog No	Format	Size
916-MSM33-P0	Purified Ab with BSA and Azide at 200ug/ml	20 ug
916-MSM33-P1	Purified Ab with BSA and Azide at 200ug/ml	100 ug
916-MSM33-P1ABX	Purified Ab WITHOUT BSA at 1.0mg/ml	100 ug

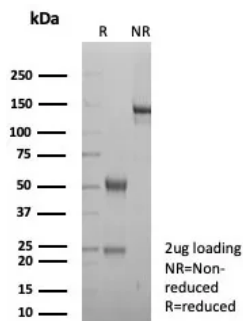
Applications	Tested Dillution	Note
Immunohistochemistry (IHC)	1-2ug/ml	30 min at RT. Staining of formalin-fixed tissues requires heating tissue sections in 10mM Tris with 1mM EDTA, pH 9.0, for 45 min at 95°C followed by cooling at RT for 20 minutes
Western Blot (WB)	2-4ug/ml	

Product Details

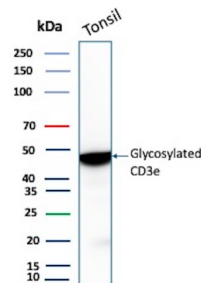
Clone	rC3e/8881
Gene Name	CD3E
Immunogen	Recombinant fragment (around aa1-200) of human CD3e protein (exact sequence is proprietary)
Host	Mouse
Clonality	Monoclonal
Isotype / Light Chain	IgG2b / Kappa
Mol. Weight of Antigen	20kDa
Cellular Localization	Cell Surface. Cytoplasm.
Species Reactivity	Human
Positive Control	Human peripheral blood. Jurkat cells. Tonsil or lymph node.

*Optimal dilution for a specific application should be determined.

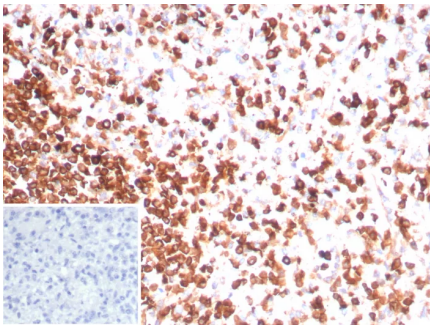
Product Images for Recombinant CD3e (T-Cell Marker) Antibody



SDS-PAGE Analysis of Purified CD3e Recombinant Mouse Monoclonal Antibody (rC3e/8881). Confirmation of Purity and Integrity of Antibody.



Western Blot Analysis of Human Tonsil tissue lysate using CD3e Recombinant Mouse Monoclonal Antibody (rC3e/8881).



Formalin-fixed, paraffin-embedded human spleen stained with CD3e Recombinant Mouse Monoclonal Antibody (rC3e/8881). Inset: PBS instead of primary antibody; secondary only negative control.

Specificity & Comments

Recognizes the epsilon-chain of CD3, which consists of five different polypeptide chains (designated as gamma, delta, epsilon, zeta, and eta) with MW ranging from 16-28kDa. The CD3 complex is closely associated at the lymphocyte cell surface with the T cell antigen receptor (TCR). Reportedly, CD3 complex is involved in signal transduction to the T cell interior following antigen recognition. The CD3 antigen is first detectable in early thymocytes and probably represents one of the earliest signs of commitment to the T cell lineage. In cortical thymocytes, CD3 is predominantly intracytoplasmic. However, in medullary thymocytes, it appears on the T cell surface. CD3 antigen is a highly specific marker for T cells, and is present in majority of T cell neoplasms.

Limitations and Warranty

This antibody is available for research use only and is not approved for use in diagnosis. There are no warranties, expressed or implied, which extend beyond this description. Company is not liable for any personal injury or economic loss resulting from this product.

Supplied As

200ug/ml of Ab purified from Bioreactor Concentrate by Protein A/G. Prepared in 10mM PBS with 0.05% BSA & 0.05% azide. Also available WITHOUT BSA & azide at 1.0mg/ml.

Storage and Stability

Antibody with azide - store at 2 to 8°C. Antibody without azide - store at -20 to -80°C. Antibody is stable for 24 months. Non-hazardous. No MSDS required.

Research Areas

Cardiovascular, Hematopoietic Stem Cells, Immunology, PD-1 blockade immunotherapy
