

HSP70-1A / HSPA1A Antibody

Mouse Monoclonal Antibody [Clone HSPA1A/7932]

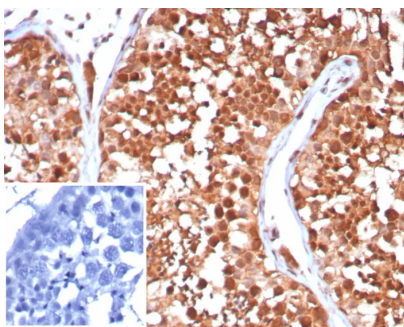
Catalog No	Format	Size
3303-MSM2-P0	Purified Ab with BSA and Azide at 200ug/ml	20 ug
3303-MSM2-P1	Purified Ab with BSA and Azide at 200ug/ml	100 ug
3303-MSM2-P1ABX	Purified Ab WITHOUT BSA or Azide at 1.0mg/ml	100 ug

Applications	Tested Dillution	Note
Western Blot (WB)	2-4ug/ml	

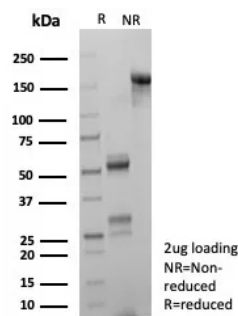
Product Details	
Clone	HSPA1A/7932
Gene Name	HSPA1A
Immunogen	Recombinant fragment (around aa200-400) of human HSPA1A protein (exact sequence is proprietary)
Host	Mouse
Clonality	Monoclonal
Isotype / Light Chain	IgG1 / Kappa
Mol. Weight of Antigen	70kDa
Cellular Localization	Cytoplasm. Localized in cytoplasmic mRNP granules containing untranslated mRNAs.
Species Reactivity	Human
Positive Control	colon or testis. Human lymph node kidney

*Optimal dilution for a specific application should be determined.

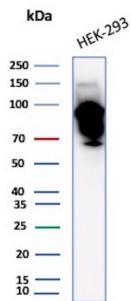
Product Images for HSP70-1A / HSPA1A Antibody



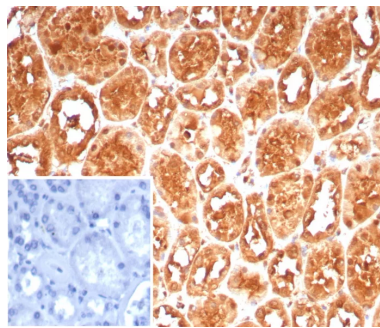
Formalin-fixed, paraffin-embedded human testis stained with HSPA1A Mouse Monoclonal Antibody (HSPA1A/7932). Inset: PBS instead of primary antibody; secondary only negative control.



SDS-PAGE Analysis of Purified HSPA1A Mouse Monoclonal Antibody (HSPA1A/7932). Confirmation of Purity and Integrity of Antibody.



Western Blot Analysis of HEK-293 cell lysate using HSP70 Mouse Monoclonal Antibody (HSPA1A/7932).



Formalin-fixed, paraffin-embedded human kidney stained with HSPA1A Mouse Monoclonal Antibody (HSPA1A/7932). Inset: PBS instead of primary antibody; secondary only negative control.

Specificity & Comments

This intronless gene encodes a 70kDa heat shock protein which is a member of the heat shock protein 70 family. In conjunction with other heat shock proteins, this protein stabilizes existing proteins against aggregation and mediates the folding of newly translated proteins in the cytosol and in organelles. It is also involved in the ubiquitin-proteasome pathway through interaction with the AU-rich element RNA-binding protein 1. The gene is located in the major histocompatibility complex class III region, in a cluster with two closely related genes which encode similar proteins. [provided by RefSeq]

Limitations and Warranty

This antibody is available for research use only and is not approved for use in diagnosis. There are no warranties, expressed or implied, which extend beyond this description. Company is not liable for any personal injury or economic loss resulting from this product.

Supplied As

200ug/ml of Ab purified from Bioreactor Concentrate by Protein A/G. Prepared in 10mM PBS with 0.05% BSA & 0.05% azide. Also available WITHOUT BSA at 1.0mg/ml.

Storage and Stability

Antibody with azide - store at 2 to 8°C. Antibody is stable for 24 months. Non-hazardous. No MSDS required.

Research Areas

Immunology, Infectious Disease, MAPK Signaling