

## LINE1 type transposase domain containing 1 / L1TD1 Antibody

Mouse Monoclonal Antibody [Clone L1TD1/7941]

Catalog No	Format	Size
54596-MSM1-P0	Purified Ab with BSA and Azide at 200ug/ml	20 ug
54596-MSM1-P1	Purified Ab with BSA and Azide at 200ug/ml	100 ug
54596-MSM1-P1ABX	Purified Ab WITHOUT BSA and Azide at 1.0mg/ml	100 ug

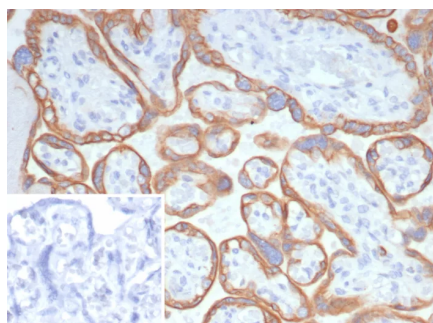
Applications	Tested Dillution	Note
Immunohistochemistry (IHC)	1-2ug/ml	30 min at RT. Staining of formalin-fixed tissues requires heating tissue sections in 10mM Tris with 1mM EDTA, pH 9.0, for 45 min at 95°C followed by cooling at RT for 20 minutes

### Product Details

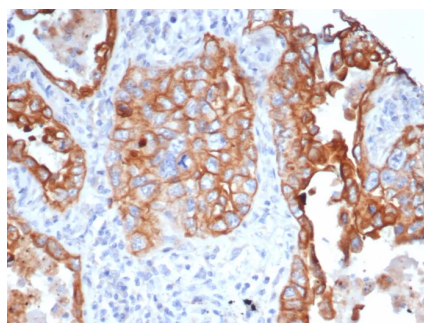
<b>Clone</b>	L1TD1/7941
<b>Gene Name</b>	L1TD1
<b>Immunogen</b>	Recombinant fragment of human L1TD1 protein (exact sequence is proprietary)
<b>Host</b>	Mouse
<b>Clonality</b>	Monoclonal
<b>Isotype / Light Chain</b>	IgG2 / Kappa
<b>Mol. Weight of Antigen</b>	99kDa
<b>Cellular Localization</b>	Cytoplasm
<b>Species Reactivity</b>	Human
<b>Positive Control</b>	Human brain, placenta or testis.

\*Optimal dilution for a specific application should be determined.

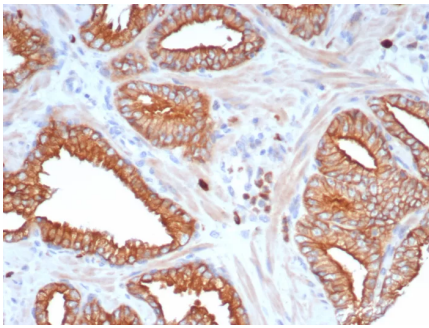
### Product Images for LINE1 type transposase domain containing 1 / L1TD1 Antibody



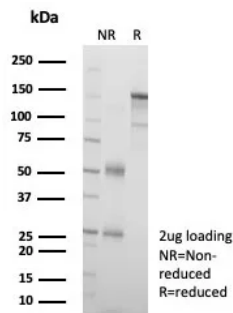
Formalin-fixed, paraffin-embedded human placenta stained with L1TD1 Mouse Monoclonal Antibody (L1TD1/7941). Inset: PBS instead of primary antibody; secondary only negative control.



Formalin-fixed, paraffin-embedded human lung stained with L1TD1 Mouse Monoclonal Antibody (L1TD1/7941). HIER: Tris/EDTA, pH9.0, 45min. 2°C: HRP-polymer, 30min. DAB, 5min.



Formalin-fixed, paraffin-embedded human prostate stained with L1TD1 Mouse Monoclonal Antibody (L1TD1/7941). HIER: Tris/EDTA, pH9.0, 45min. 2°C: HRP-polymer, 30min. DAB, 5min.



SDS-PAGE Analysis of Purified L1TD1 Mouse Monoclonal Antibody (L1TD1/7941). Confirmation of Purity and Integrity of Antibody.

### Specificity & Comments

L1TD1 (LINE-1 type transposase domain containing 1), also known as ECAT11 (ES cell-associated protein 11), is an 865 amino acid protein that belongs to the transposase 22 family and is encoded by a gene that maps to human chromosome 1p31.3. Chromosome 1 spans 260 million base pairs, contains over 3,000 genes and comprises nearly 8% of the human genome. Chromosome 1 houses a large number of disease-associated genes, including those that are involved in familial adenomatous polyposis, Stickler syndrome, Parkinson s disease, Gaucher disease, schizophrenia and Usher syndrome. Aberrations in chromosome 1 are found in a variety of cancers, including head and neck cancer, malignant melanoma and multiple myeloma.

### Limitations and Warranty

This antibody is available for research use only and is not approved for use in diagnosis. There are no warranties, expressed or implied, which extend beyond this description. Company is not liable for any personal injury or economic loss resulting from this product.

### Supplied As

200ug/ml of Ab purified from Bioreactor Concentrate by Protein A/G. Prepared in 10mM PBS with 0.05% BSA & 0.05% azide. Also available WITHOUT BSA & azide at 1.0mg/ml.

### Storage and Stability

Antibody with azide - store at 2 to 8°C. Antibody without azide - store at -20 to -80°C. Antibody is stable for 24 months. Non-hazardous. No MSDS required.