

OVOL2 / CRE-Bpa Antibody

Mouse Monoclonal Antibody [Clone OVOL2/6776]

Catalog No	Format	Size
58495-MSM6-P0	Purified Ab with BSA and Azide at 200ug/ml	20 ug
58495-MSM6-P1	Purified Ab with BSA and Azide at 200ug/ml	100 ug
58495-MSM6-P1ABX	Purified Ab WITHOUT BSA and Azide at 1.0mg/ml	100 ug

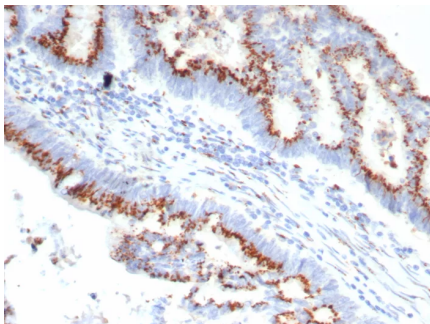
Applications	Tested Dillution	Note
Immunohistochemistry (IHC)	1-2ug/ml	30 min at RT. Staining of formalin-fixed tissues requires heating tissue sections in 10mM Tris with 1mM EDTA, pH 9.0, for 45 min at 95°C followed by cooling at RT for 20 minutes

Product Details

Clone	OVOL2/6776
Gene Name	OVOL2
Immunogen	Recombinant fragment (around aa175-275) of human OVOL2 protein (exact sequence is proprietary)
Host	Mouse
Clonality	Monoclonal
Isotype / Light Chain	IgG2 / Kappa
Mol. Weight of Antigen	69.1kDa
Cellular Localization	Nucleus.
Species Reactivity	Human
Positive Control	HeLa U87 or K562 cells.

*Optimal dilution for a specific application should be determined.

Product Images for OVOL2 / CRE-Bpa Antibody



Formalin-fixed, paraffin-embedded human colon carcinoma stained with OVOL2 Mouse Monoclonal Antibody (OVOL2/6776). HIER: Tris/EDTA, pH9.0, 45min. 2°C: HRP-polymer, 30min. DAB, 5min.

Specificity & Comments

The ATF/CREB family consists of a series of transcription factors that function by binding to the cAMP responsive element (CRE) palindromic octanucleotide, TGACCTCA. The best characterized members of this gene family include CREB-1, CREB-2 (also designated ATF-4), CRE-BPa, LZIP (also designated CREB-3 and Luman), CREM-2, ATF-1, ATF-2, ATF-3, ATF-5, ATF-6 and ATF-7. These transcription factors share terminal leucine zipper dimerization and basic DNA binding domains and are highly variable in their N-termini. Although each of the ATF/ CREB proteins bind CREs in their homodimeric form, they can also bind as heterodimers, both within the ATF/CREB family and with members of the AP-1 transcription factor family. Protein kinase A- mediated CREB phosphorylation induces association with a nuclear protein designated CBP (CREB-binding protein), which may represent a CREB coactivator. CRE-BPa is a nuclear protein that binds DNA as a homodimer but can also form a heterodimer with ATF-2 or Jun.

Limitations and Warranty

This antibody is available for research use only and is not approved for use in diagnosis. There are no warranties, expressed or implied, which extend beyond this description. Company is not liable for any personal injury or economic loss resulting from this product.

Supplied As

200ug/ml of Ab purified from Bioreactor Concentrate by Protein A/G. Prepared in 10mM PBS with 0.05% BSA & 0.05% azide. Also available WITHOUT BSA & azide at 1.0mg/ml.

Storage and Stability

Antibody with azide - store at 2 to 8°C. Antibody without azide - store at -20 to -80°C. Antibody is stable for 24 months. Non-hazardous. No MSDS required.

Research Areas

Cardiovascular, Nuclear Marker
