

Recombinant S100A12 / CGRP Antibody

Rabbit Monoclonal Antibody [Clone S100A12/8952R]

Catalog No	Format	Size
6283-RBM9-P0	Purified Ab with BSA and Azide at 200ug/ml	20 ug
6283-RBM9-P1	Purified Ab with BSA and Azide at 200ug/ml	100 ug
6283-RBM9-P1ABX	Purified Ab WITHOUT BSA and Azide at 1.0mg/ml	100 ug

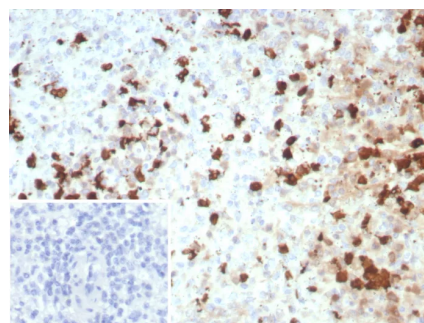
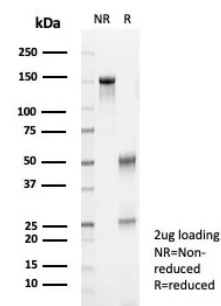
Applications	Tested Dillution	Note
Immunohistochemistry (IHC)	1-2ug/ml	30 min at RT. Staining of formalin-fixed tissues requires heating tissue sections in 10mM Tris with 1mM EDTA, pH 9.0, for 45 min at 95°C followed by cooling at RT for 20 minutes

Product Details

Clone	S100A12/8952R
Gene Name	S100A12
Immunogen	Recombinant fragment (around aa1-95) of human S100A12 protein (exact sequence is proprietary)
Host	Rabbit
Clonality	Monoclonal
Isotype / Light Chain	IgG / Kappa
Mol. Weight of Antigen	11kDa
Cellular Localization	Secreted.
Species Reactivity	Human
Positive Control	Monocytes and lymphocytes.

*Optimal dilution for a specific application should be determined.

Product Images for Recombinant S100A12 / CGRP Antibody



SDS-PAGE Analysis of Purified S100A12 Recombinant Rabbit Monoclonal Antibody (S100A12/8952R). Confirmation of Purity and Integrity of Antibody.

Formalin-fixed, paraffin-embedded human spleen stained with S100A12 Recombinant Rabbit Monoclonal Antibody (S100A12/8952R). Inset: PBS instead of primary antibody; secondary only negative control.

Specificity & Comments

The family of EF-hand type Ca²⁺-binding proteins includes Calbindin (previously designated vitamin D-dependent Ca²⁺-binding protein), S-100 β and γ , Calgranulins A (also designated MRP8), B (also designated MRP14) and C (S-100 like proteins) and the parvalbumin family members, including parvalbumin β and parvalbumin γ (also designated oncomodulin). Calbindin, S-100 proteins and parvalbumin proteins are each expressed in neural tissues. In addition, S-100 β and γ are present in a variety of other tissues, and Calbindin is present in intestine and kidney. Parvalbumin β is also found in fast-contracting/relaxing skeletal muscle fibers and parvalbumin γ is found in many tumor tissues as well as in the organ of Corti. Calbindin, S-100 proteins and parvalbumins have all been detected in Leydig cells and the testis. These proteins are thought to play a role in hormone production and spermatogenesis. Calgranulin is expressed in macrophages and epithelial cells.

Limitations and Warranty

This antibody is available for research use only and is not approved for use in diagnosis. There are no warranties, expressed or implied, which extend beyond this description. Company is not liable for any personal injury or economic loss resulting from this product.

Supplied As

200ug/ml of Ab purified from Bioreactor Concentrate by Protein A/G. Prepared in 10mM PBS with 0.05% BSA & 0.05% azide. Also available WITHOUT BSA & azide at 1.0mg/ml.

Storage and Stability

Antibody with azide - store at 2 to 8°C. Antibody without azide - store at -20 to -80°C. Antibody is stable for 24 months. Non-hazardous. No MSDS required.

Research Areas

Cardiovascular, Cytokine Signaling, Immunology
