

Cytokeratin 20 (KRT20) (Colorectal Epithelial Marker) Antibody

Mouse Monoclonal Antibody [Clone Ks20.8]

Catalog No	Format	Size
54474-MSM15-P0	Purified Ab with BSA and Azide at 200ug/ml	20 ug
54474-MSM15-P1	Purified Ab with BSA and Azide at 200ug/ml	100 ug
54474-MSM15-P1ABX	Purified Ab WITHOUT BSA and Azide at 1.0mg/ml	100 ug

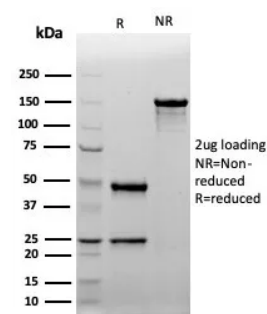
Applications	Tested Dillution	Note
Immunohistochemistry (IHC)	1-2ug/ml	30 min at RT. Staining of formalin-fixed tissues requires heating tissue sections in 10mM Tris with 1mM EDTA, pH 9.0, for 45 min at 95°C followed by cooling at RT for 20 minutes

Product Details

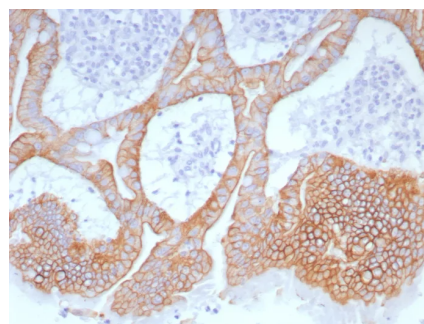
Clone	Ks20.8
Gene Name	KRT20
Immunogen	Recombinant fragment of human KRT20 protein (around aa 196-323) (exact sequence is proprietary)
Host	Mouse
Clonality	Monoclonal
Isotype / Light Chain	IgG1 / Kappa
Mol. Weight of Antigen	46kDa
Cellular Localization	Cytoplasm
Species Reactivity	Human
Positive Control	HT29 cells. Human colon or prostate carcinoma.

*Optimal dilution for a specific application should be determined.

Product Images for Cytokeratin 20 (KRT20) (Colorectal Epithelial Marker) Antibody



SDS-PAGE Analysis of Purified CK20 Mouse Monoclonal Antibody (Ks20.8). Confirmation of Purity and Integrity of Antibody.



IHC analysis of formalin-fixed, paraffin-embedded human colon. CK20 Mouse Monoclonal Antibody (Ks20.8). HIER: Tris/EDTA, pH9.0, 45min. 2°C: HRP-polymer, 30min. DAB, 5min.

Specificity & Comments

This MAbs recognizes an intermediate filament protein of 46kDa, identified as cytokeratin 20 (KRT20). KRT20 is abundantly expressed in goblet cells and enterocytes of the gastrointestinal tract. It is a useful marker of pancreatic and colorectal cancer. KRT20 is expressed under normal, hyperplastic and neoplastic conditions. It has been detected in adenocarcinomas of the colon, stomach and biliary tract. Breast carcinomas are generally non-reactive.

Supplied As

200ug/ml of Ab purified from Bioreactor Concentrate by Protein A/G. Prepared in 10mM PBS with 0.05% BSA & 0.05% azide. Also available WITHOUT BSA & azide at 1.0mg/ml.

Storage and Stability

Antibody with azide - store at 2 to 8°C. Antibody without azide - store at -20 to -80°C. Antibody is stable for 24 months. Non-hazardous. No MSDS required.

Research Areas

Developmental Biology

Limitations and Warranty

This antibody is available for research use only and is not approved for use in diagnosis. There are no warranties, expressed or implied, which extend beyond this description. Company is not liable for any personal injury or economic loss resulting from this product.
