

Cytokeratin 5/6 (Basal, Myoepithelial & Mesothelial Cell Marker) Antibody

Mouse Monoclonal Antibody [Clone KRT5.6/9104]

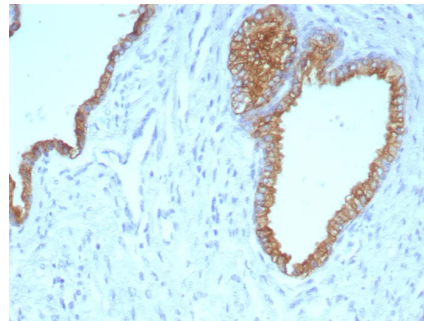
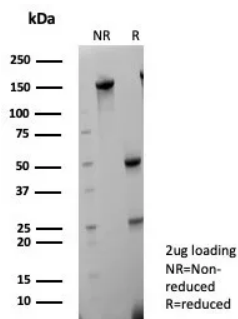
Catalog No	Format	Size
MSM4-9104-P0	Purified Ab with BSA and Azide	200ug/ml
MSM4-9104-P1	Purified Ab with BSA and Azide	200ug/ml
MSM4-9104-P1ABX	Purified Ab WITHOUT BSA and Azide	1.0mg/ml

Applications	Tested Dillution
Immunohistochemistry (IHC)	1-2ug/ml

Product Details	
Clone	KRT5.6/9104
Gene Name	KRT5
Immunogen	Recombinant fragments of human Cytokeratin 5 (KRT5) and Cytokeratin 6 proteins (exact sequences are proprietary)
Host	Mouse
Clonality	Monoclonal
Isotype / Light Chain	IgG1 / Kappa
Mol. Weight of Antigen	58kDa (KRT5); 56kDa (KRT6)
Cellular Localization	Cytoplasm.
Species Reactivity	Human
Positive Control	Human prostate or skin tissue.

**Optimal dilution for a specific application should be determined.*

Product Images for Cytokeratin 5/6 (Basal, Myoepithelial & Mesothelial Cell Marker) Antibody



SDS-PAGE Analysis of Purified Cytokeratin 5/6 Mouse Monoclonal Antibody (KRT5.6/9104). Confirmation of Purity and Integrity of Antibody.

Formalin-fixed, paraffin-embedded human prostate carcinoma stained with Cytokeratin 5/6 Mouse Monoclonal Antibody (KRT5.6/9104). HIER: Tris/EDTA, pH9.0, 45min. 2°C: HRP-polymer, 30min. DAB, 5min.

Specificity & Comments

Cytokeratin 5 is a basic protein that is closely related to cytokeratin 6. They share similar tissue distribution and are found in various proportions in many non-keratinizing stratified squamous epithelia eg. tongue mucosa, as well as in basal epithelia of trachea, basal cells of epidermis, hair follicles, sebaceous and sweat glands of skin, luminal cells of the mammary gland, basal cells of prostate, urothelium, vagina and endocervical mucosa. Cytokeratins 5 and 6 are also expressed in basal cell epitheliomas, squamous cell carcinomas of skin, tongue, epiglottis and of the rectal-anal region. Cytokeratin 5&6 is a useful aid for classification of epithelioid mesotheliomas.

Known Applications & Suggested Dilutions

Immunohistochemistry (Formalin-fixed) (1-2ug/ml for 30 minutes at RT),(Staining of formalin-fixed tissues requires heating tissue sections in 10mM Tris with 1mM EDTA, pH 9.0, for 45 min at 95°C followed by cooling at RT for 20 minutes),Optimal dilution for a specific application should be determined.

Limitations and Warranty

This antibody is available for research use only and is not approved for use in diagnosis.

There are no warranties, expressed or implied, which extend beyond this description. Company is not liable for any personal injury or economic loss resulting from this product.

Supplied As

200ug/ml of Ab purified from Bioreactor Concentrate by Protein A/G. Prepared in 10mM PBS with 0.05% BSA & 0.05% azide. Also available WITHOUT BSA & azide at 1.0mg/ml.

Storage and Stability

Antibody with azide - store at 2 to 8°C. Antibody without azide - store at -20 to -80°C. Antibody is stable for 24 months. Non-hazardous. No MSDS required.
