

## Recombinant TAG-72 / CA72.4 (Tumor-Associated Glycoprotein) Antibody

Mouse Monoclonal Antibody [Clone rTAG72/9132]

Catalog No	Format	Size
182875-MSM13-P0	Purified Ab with BSA and Azide at 200ug/ml	20 ug
182875-MSM13-P1	Purified Ab with BSA and Azide at 200ug/ml	100 ug
182875-MSM13-P1ABX	Purified Ab WITHOUT BSA and Azide at 1.0mg/ml	100 ug

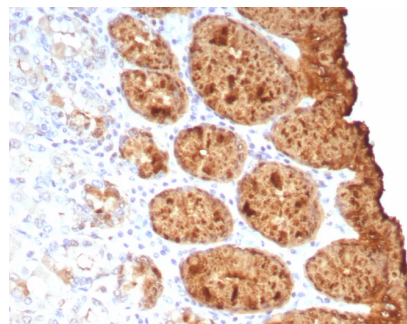
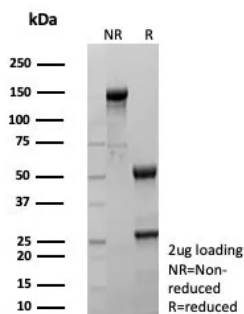
Applications	Tested Dillution	Note
Immunohistochemistry (IHC)	1-2ug/ml	30 min at RT. Staining of formalin-fixed tissues requires heating tissue sections in 10mM Tris with 1mM EDTA, pH 9.0, for 45 min at 95°C followed by cooling at RT for 20 minutes

### Product Details

Clone	rTAG72/9132
Immunogen	Membrane-enriched fraction of a human breast carcinoma liver metastasis
Host	Mouse
Clonality	Monoclonal
Isotype / Light Chain	IgG1 / Kappa
Mol. Weight of Antigen	220kDa
Cellular Localization	Cytoplasm. Cell surface.
Species Reactivity	Human
Positive Control	Human breast or lung carcinoma.

\*Optimal dilution for a specific application should be determined.

### Product Images for Recombinant TAG-72 / CA72.4 (Tumor-Associated Glycoprotein) Antibody



SDS-PAGE Analysis of Purified TAG-72 Recombinant Mouse Monoclonal Antibody (rTAG72/9132). Confirmation of Purity and Integrity of Antibody.

Formalin-fixed, paraffin-embedded human colon stained with TAG-72 Recombinant Mouse Monoclonal Antibody (rTAG72/9132). HIER: Tris/EDTA, pH9.0, 45min. 2°C: HRP-polymer, 30min. DAB, 5min.

### **Specificity & Comments**

Recognizes an oncofetal antigen of 220kDa, identified as a tumor-associated glycoprotein (TAG-72) with properties of a mucin. This MAb defines the mucin-carried sialylated-Tn epitope. TAG-72 is usually expressed by adenocarcinomas, but is negative in mesotheliomas. Studies have reported that this antibody has 80% sensitivity and 93% specificity for pulmonary adenocarcinoma. Therefore, TAG-72 is a useful marker to distinguish between mesothelioma and adenocarcinoma. However, false positive reactions can occur so results must be interpreted with the utmost caution. This antibody may be useful in the differentiation of non-small cell carcinomas from small cell carcinomas of the lung. The combined use of anti-TAG-72 and anti-GCDFP-15 is valuable in the diagnosis of apocrine carcinoma.

---

### **Limitations and Warranty**

This antibody is available for research use only and is not approved for use in diagnosis. There are no warranties, expressed or implied, which extend beyond this description. Company is not liable for any personal injury or economic loss resulting from this product.

---

### **Supplied As**

200ug/ml of Ab purified from Bioreactor Concentrate by Protein A/G. Prepared in 10mM PBS with 0.05% BSA & 0.05% azide. Also available WITHOUT BSA & azide at 1.0mg/ml.

---

### **Storage and Stability**

Antibody with azide - store at 2 to 8°C. Antibody without azide - store at -20 to -80°C. Antibody is stable for 24 months. Non-hazardous. No MSDS required.

---