

Aldo-keto Reductase Family 1 Member C1 / DD1 Antibody

Mouse Monoclonal Antibody [Clone AKR1C1/9314]

| Catalog No | Format | Size |
|------------------|-----------------------------------------------|--------|
| 1645-MSM14-P0 | Purified Ab with BSA and Azide at 200ug/ml | 20 ug |
| 1645-MSM14-P1 | Purified Ab with BSA and Azide at 200ug/ml | 100 ug |
| 1645-MSM14-P1ABX | Purified Ab WITHOUT BSA and Azide at 1.0mg/ml | 100 ug |

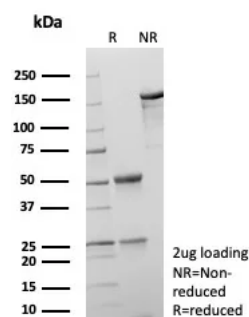
| Applications | Tested Dillution | Note |
|----------------------------|------------------|-----------------------------------------------------------------------------------------------------------------------------------------------------------------------------------|
| Immunohistochemistry (IHC) | 1-2ug/ml | 30 min at RT. Staining of formalin-fixed tissues requires heating tissue sections in 10mM Tris with 1mM EDTA, pH 9.0, for 45 min at 95°C followed by cooling at RT for 20 minutes |

Product Details

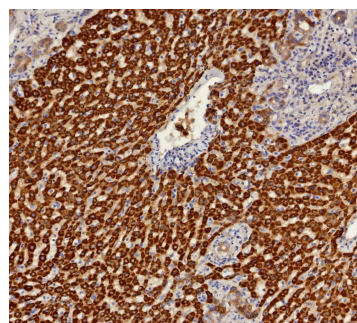
| | |
|------------------------|----------------------------------------------|
| Clone | AKR1C1/9314 |
| Gene Name | AKR1C1 |
| Immunogen | Recombinant human full-length AKR1C1 protein |
| Host | Mouse |
| Clonality | Monoclonal |
| Isotype / Light Chain | IgG2b / Kappa |
| Mol. Weight of Antigen | 37kDa |
| Cellular Localization | Cytoplasm. |
| Species Reactivity | Human |
| Positive Control | Human liver or stomach tissue. |

*Optimal dilution for a specific application should be determined.

Product Images for Aldo-keto Reductase Family 1 Member C1 / DD1 Antibody



SDS-PAGE Analysis Purified AKR1C1 Mouse Monoclonal Antibody (AKR1C1/9314). Confirmation of Purity and Integrity of Antibody.



Formalin-fixed, paraffin-embedded human hepatocellular carcinoma stained with AKR1C1 Mouse Monoclonal Antibody (AKR1C1/9314). HIER: Tris/EDTA, pH9.0, 45min. 2°: HRP-polymer, 30min. DAB, 5min.

Specificity & Comments

DDH / AKR1C1 is a member of the aldo/keto reductase superfamily, which consists of more than 40 known enzymes and proteins. These enzymes catalyze the conversion of aldehydes and ketones to their corresponding alcohols by utilizing NADH and/or NADPH as cofactors. The enzymes display overlapping but distinct substrate specificity. This enzyme catalyzes the reaction of progesterone to the inactive form 20-alpha-hydroxy-progesterone.

Supplied As

200ug/ml of Ab purified from Bioreactor Concentrate by Protein A/G. Prepared in 10mM PBS with 0.05% BSA & 0.05% azide. Also available WITHOUT BSA & azide at 1.0mg/ml.

Storage and Stability

Antibody with azide - store at 2 to 8°C. Antibody without azide - store at -20 to -80°C. Antibody is stable for 24 months. Non-hazardous. No MSDS required.

Research Areas

Cardiovascular

Limitations and Warranty

This antibody is available for research use only and is not approved for use in diagnosis. There are no warranties, expressed or implied, which extend beyond this description. Company is not liable for any personal injury or economic loss resulting from this product.
