

ER-beta (Estrogen Receptor beta-2) Antibody

Mouse Monoclonal Antibody [Clone ESR2/6661]

Catalog No	Format	Size
2100-MSM14-P0	Purified Ab with BSA and Azide at 200ug/ml	20 ug
2100-MSM14-P0-2	Purified Ab with BSA and Azide at 200ug/ml	100 ug
2100-MSM14-P1ABX	Purified Ab WITHOUT BSA and Azide at 1.0mg/ml	100 ug

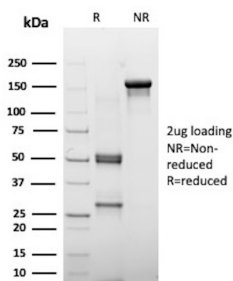
Applications	Tested Dillution	Note
Western Blot (WB)	2-4ug/ml	

Product Details

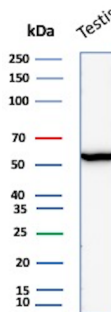
Clone	ESR2/6661
Gene Name	ESR2
Immunogen	A synthetic peptide (CGMKMETLLPEATMEQ) from the C terminus of the human estrogen receptor beta 2 isomer
Host	Mouse
Clonality	Monoclonal
Isotype / Light Chain	IgG1 / Kappa
Mol. Weight of Antigen	59kDa
Cellular Localization	Nucleus
Species Reactivity	Human
Positive Control	MCF-7 cells. Human testis tissue.

*Optimal dilution for a specific application should be determined.

Product Images for ER-beta (Estrogen Receptor beta-2) Antibody



SDS-PAGE Analysis of Purified Estrogen Receptor Beta 2 Mouse Monoclonal Antibody (ESR2/6661). Confirmation of Purity and Integrity of Antibody.



Western blot analysis of human testis tissue lysate using Estrogen Receptor Beta 2 Mouse Monoclonal Antibody (ESR2/6661).

Specificity & Comments

This MAb recognizes the estrogen receptor beta 2 isoform, expressed in cell nuclei of a range of human tissues including ovary, placenta, testis and vas deferens. No cross-reactivity is seen with estrogen receptor beta 1 isoform. This gene encodes a member of the family of estrogen receptors and superfamily of nuclear receptor transcription factors. The gene product contains an N-terminal DNA binding domain and C-terminal ligand binding domain and is localized to the nucleus, cytoplasm, and mitochondria. Upon binding to 17beta-estradiol or related ligands, the encoded protein forms homo- or hetero-dimers that interact with specific DNA sequences to activate transcription. Some isoforms dominantly inhibit the activity of other estrogen receptor family members.

Supplied As

200ug/ml of Ab purified from Bioreactor Concentrate by Protein A/G. Prepared in 10mM PBS with 0.05% BSA & 0.05% azide. Also available WITHOUT BSA & azide at 1.0mg/ml.

Storage and Stability

Antibody with azide - store at 2 to 8 °C. Antibody without azide - store at -20 to -80 °C. Antibody is stable for 24 months. Non-hazardous. No MSDS required.

Research Areas

Breast Cancer, Cardiovascular, Infectious Disease, Nuclear Marker, Signal Transduction, Transcription Factors

Limitations and Warranty

This antibody is available for research use only and is not approved for use in diagnosis. There are no warranties, expressed or implied, which extend beyond this description. Company is not liable for any personal injury or economic loss resulting from this product.
