

## CETN1 / Centrin-1 Antibody

Mouse Monoclonal Antibody [Clone CETN1/9880]

Catalog No	Format	Size
1068-MSM10-P0	Purified Ab with BSA and Azide at 200ug/ml	20 ug
1068-MSM10-P1	Purified Ab with BSA and Azide at 200ug/ml	100 ug
1068-MSM10-P1ABX	Purified Ab WITHOUT BSA and Azide at 1.0mg/ml	100 ug

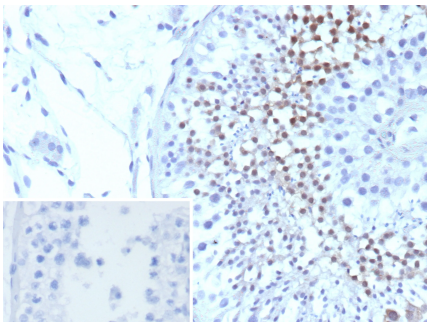
Applications	Tested Dillution	Note
Immunohistochemistry (IHC)	1-2ug/ml	30 min at RT. Staining of formalin-fixed tissues requires heating tissue sections in 10mM Tris with 1mM EDTA, pH 9.0, for 45 min at 95°C followed by cooling at RT for 20 minutes

### Product Details

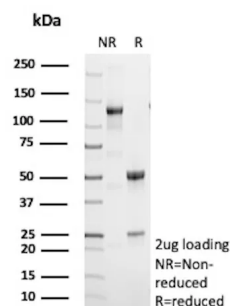
<b>Clone</b>	CETN1/9880
<b>Gene Name</b>	CETN1
<b>Immunogen</b>	Recombinant fragment (around aa 1-172) of human CETN1 protein (exact sequence is proprietary)
<b>Host</b>	Mouse
<b>Clonality</b>	Monoclonal
<b>Isotype / Light Chain</b>	IgG
<b>Mol. Weight of Antigen</b>	20KDa
<b>Cellular Localization</b>	Cell projection, Centrosome, Cytoplasm, Cytoskeleton
<b>Species Reactivity</b>	Human
<b>Positive Control</b>	Human testis.

\*Optimal dilution for a specific application should be determined.

### Product Images for CETN1 / Centrin-1 Antibody



Formalin-fixed, paraffin-embedded human testis stained with Centrin-1 Mouse Monoclonal Antibody (CETN1/9880). Inset: PBS instead of primary antibody; secondary only negative control.



SDS-PAGE Analysis Purified CETN1 Mouse Monoclonal Antibody (CETN1/9880). Confirmation of Purity and Integrity of Antibody.

### Specificity & Comments

EF-hand type Ca<sup>2+</sup>-binding proteins consists of several family members, including Centrin-1, Centrin-2 and Centrin-3. The Centrin proteins are ubiquitously expressed cytoskeletal components that show increased expression during cell differentiation. Tissues where cilia are present, such as the retina and testis, express both Centrin-1 and -2, but Centrin-2 is also expressed in nondifferentiated, nonciliated retinal cells (retinoblastoma cells), liver, skeletal muscle, and cardiac muscle. In these tissues, Centrin associates with the centrosomes, mitotic spindle poles, and basal bodies. Knockdown studies reveal a requirement for Centrin in centriole duplication and organization of spindle pole morphology and the completion of cytokinesis. Centrin 3 plays a role in centrosome reproduction.

### Supplied As

200ug/ml of Ab purified from Bioreactor Concentrate by Protein A/G. Prepared in 10mM PBS with 0.05% BSA & 0.05% azide. Also available WITHOUT BSA & azide at 1.0mg/ml.

### Storage and Stability

Antibody with azide - store at 2 to 8 °C. Antibody without azide - store at -20 to -80 °C. Antibody is stable for 24 months. Non-hazardous. No MSDS required.

### Research Areas

Signal Transduction

## Limitations and Warranty

This antibody is available for research use only and is not approved for use in diagnosis. There are no warranties, expressed or implied, which extend beyond this description. Company is not liable for any personal injury or economic loss resulting from this product.

---