

Ep-CAM / CD326 (Extracellular Domain) (Epithelial Marker) Antibody

Mouse Monoclonal Antibody [Clone EGP40/837]

| Catalog No | Format | Size |
|-------------------|------------------------------|--------------------|
| 4072-MSM7-PE-100T | Purified Ab conjugated to PE | 0.5 ml at 100ug/ml |

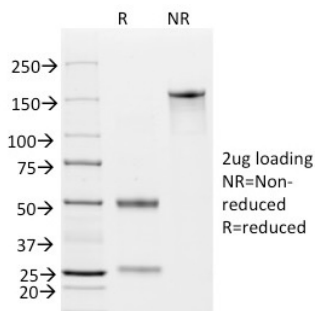
| Applications | Tested Dillution | Note |
|----------------------------|---------------------|---|
| Flow Cytometry (Flow) | 1-2ug/million cells | |
| Immunofluorescence (IF) | 1-3ug/ml | |
| Immunohistochemistry (IHC) | 1-2ug/ml | 30 min at RT. Staining of formalin-fixed tissues requires heating tissue sections in 10mM Tris with 1mM EDTA, pH 9.0, for 45 min at 95°C followed by cooling at RT for 20 minutes |
| Western Blot (WB) | 2-4ug/ml | |

Product Details

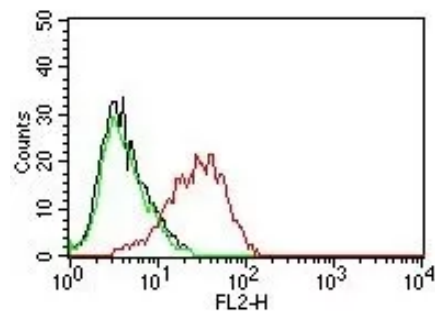
| | |
|-------------------------------|--|
| Clone | EGP40/837 |
| Gene Name | EPCAM |
| Immunogen | Recombinant human TACSTD1 protein |
| Host | Mouse |
| Clonality | Monoclonal |
| Isotype / Light Chain | IgG1 |
| Mol. Weight of Antigen | 40-43kDa |
| Cellular Localization | Cell junction, Cell surface, Lateral cell membrane, Tight junction |
| Species Reactivity | Human |
| Positive Control | HT29 cells. Breast tumor. |

*Optimal dilution for a specific application should be determined.

Product Images for Ep-CAM / CD326 (Extracellular Domain) (Epithelial Marker) Antibody



SDS-PAGE Analysis of Purified EpCAM Mouse Monoclonal Antibody (EGP40/837). Confirmation of Integrity and Purity of Antibody.



Flow Cytometry of human MCF-7 cells. Black: cells alone; Green: Isotype Control; Red: PE-labeled EpCAM Mouse Monoclonal Antibody (EGP40/837).

Specificity & Comments

EGP40 is a 40-43kDa transmembrane epithelial glycoprotein, also identified as epithelial specific antigen (ESA), or epithelial cellular adhesion molecule (Ep-CAM). It is expressed on baso-lateral cell surface in most simple epithelia and a vast majority of carcinomas with the exception of adult squamous epithelium, hepatocytes and gastric epithelial cells. This antibody has been used to distinguish adenocarcinoma from pleural mesothelioma and hepatocellular carcinoma. This antibody is also useful in distinguishing serous carcinomas of the ovary from mesothelioma.

Limitations and Warranty

This antibody is available for research use only and is not approved for use in diagnosis. There are no warranties, expressed or implied, which extend beyond this description. Company is not liable for any personal injury or economic loss resulting from this product.

Supplied As

200ug/ml of Ab Purified from Bioreactor Concentrate by Protein A/G. Prepared in 10mM PBS with 0.05% BSA & 0.05% azide. Also available WITHOUT BSA & azide at 1.0mg/ml.

Storage and Stability

Antibody with azide - store at 2 to 8°C. Antibody without azide - store at -20 to -80°C. Antibody is stable for 24 months. Non-hazardous. No MSDS required.

Research Areas

Stem Cell Differentiation
