

## CD28 Antibody

Mouse Monoclonal Antibody [Clone CB28]

Catalog No	Format	Size
940-MSM1-PE-100T	Purified Ab Conjugated to PE	0.5 ml at 100ug/ml

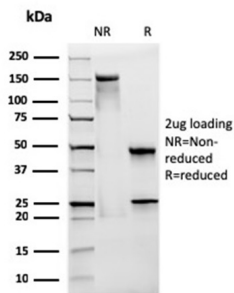
Applications	Tested Dillution	Note
Flow Cytometry (Flow)	1-2ug/million cells	
Immunofluorescence (IF)	1-3ug/ml	

### Product Details

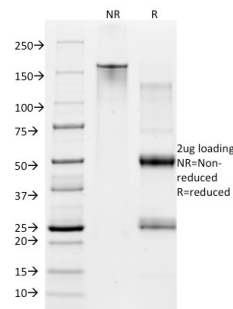
<b>Clone</b>	CB28
<b>Gene Name</b>	CD28
<b>Immunogen</b>	Recombinant human CD28 protein
<b>Host</b>	Mouse
<b>Clonality</b>	Monoclonal
<b>Isotype / Light Chain</b>	IgG1
<b>Mol. Weight of Antigen</b>	44kDa (monomer); 88kDa (dimer)
<b>Cellular Localization</b>	Cell surface, Membrane
<b>Species Reactivity</b>	Human
<b>Positive Control</b>	Jurkat cells. Human lymph nodes and tonsils.

\*Optimal dilution for a specific application should be determined.

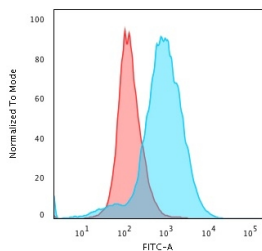
### Product Images for CD28 Antibody



SDS-PAGE Analysis of Purified CD28 Mouse Monoclonal Antibody (CB28). Confirmation of Integrity and Purity of Antibody.



SDS-PAGE Analysis of Purified CD28 Mouse Monoclonal Antibody (CB28) (unconjugated). Confirmation of Purity and Integrity of Antibody.



Flow Cytometric Analysis of PFA-fixed Jurkat cells using CD28 Mouse Monoclonal Antibody (CB28) followed by goat anti-mouse IgG-CF488 (blue); isotype control (red).

**Specificity & Comments**

Recognizes a glycoprotein of 44-88kDa, which is identified as CD28. It is the critical T-cell co-stimulatory receptor which provides to the cell the important second activation signal by binding CD80 and CD86 that are expressed by antigen presenting cells. Besides its co-stimulation role, CD28 functions in preventing T-cells from anergic hyporesponsive state or from undergoing premature apoptotic cell death. CD28 is also expressed on human fetal NK cells and some NK cell lines, whereas on murine NK cells the CD28 expression is much broader.

---

**Limitations and Warranty**

This antibody is available for research use only and is not approved for use in diagnosis. There are no warranties, expressed or implied, which extend beyond this description. Company is not liable for any personal injury or economic loss resulting from this product.

---

**Supplied As**

200ug/ml of Ab purified from Bioreactor Concentrate by Protein A/G. Prepared in 10mM PBS with 0.05% BSA & 0.05% azide. Also available WITHOUT BSA & azide at 1.0mg/ml.

---

**Storage and Stability**

Antibody with azide - store at 2 to 8 °C. Antibody without azide - store at -20 to -80 °C. Antibody is stable for 24 months. Non-hazardous. No MSDS required.

---

**Research Areas**

Cardiovascular, Immunology, AKT Signaling, Dendritic Cell Marker, Hematopoietic Stem Cells, Immune checkpoint, Infectious Disease, Signal Transduction

---