

Cytokeratin 7 (Glandular and Transitional Epithelial Marker) Antibody

Mouse Monoclonal Antibody [Clone OV-TL12/30]

Catalog No	Format	Size
3855-MSM1-B1	Purified Ab conjugated to Biotin	0.5 ml at 100ug/ml

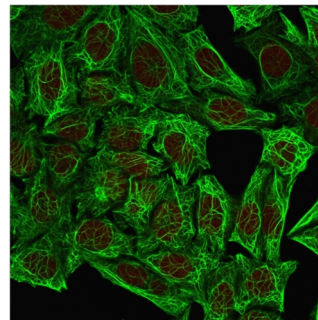
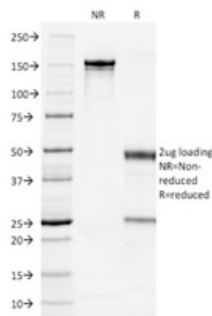
Applications	Tested Dillution	Note
Flow Cytometry (Flow)	1-2ug/million cells	
Immunofluorescence (IF)	1-3ug/ml	
Immunohistochemistry (IHC)	1-2ug/ml	30 min at RT. Staining of formalin-fixed tissues requires heating tissue sections in 10mM Tris with 1mM EDTA, pH 9.0, for 45 min at 95°C followed by cooling at RT for 20 minutes
Western Blot (WB)	2-4ug/ml	

Product Details

Clone	OV-TL12/30
Gene Name	KRT7
Immunogen	OTN 11, ovarian carcinoma cell line
Host	Mouse
Clonality	Monoclonal
Isotype / Light Chain	IgG1
Mol. Weight of Antigen	55kDa
Cellular Localization	Cytoplasm
Species Reactivity	Human
Positive Control	HeLa cells. Carcinoma of ovary

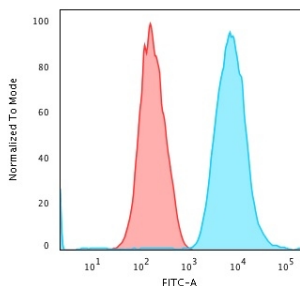
*Optimal dilution for a specific application should be determined.

Product Images for Cytokeratin 7 (Glandular and Transitional Epithelial Marker) Antibody



SDS-PAGE Analysis Purified Cytokeratin 7 Mouse Monoclonal Antibody (OV-TL12/30). Confirmation of Integrity and Purity of Antibody

Immunofluorescent staining of methanol-fixed HeLa cells. KRT7 Mouse Monoclonal Antibody (OV-TL12/30) followed by goat anti-Mouse IgG-CF488 (Green). The nuclear counterstain is Redot.



Flow Cytometric Analysis of trypsinised MeOH-fixed HeLa cells using KRT7 Mouse Monoclonal Antibody (SPM270) followed by Goat anti-Mouse IgG-CF488 (Blue); Isotype Control (Red).

Specificity & Comments

It recognizes an intermediate filament protein (IFP) of 55kDa, which is identified as cytokeratin 7. This MAb is highly specific to cytokeratin 7 and shows no cross-reaction with other IFPs. Cytokeratin 7 is a basic cytokeratin, which is found in most glandular and transitional epithelia but not in the stratified squamous epithelia. Keratin 7 is expressed in the epithelial cells of ovary, lung, and breast but not of colon, prostate, or gastrointestinal tract. This MAb is highly useful in distinguishing ovarian carcinomas (keratin 7+) from colon carcinomas (keratin 7-).

Limitations and Warranty

This antibody is available for research use only and is not approved for use in diagnosis. There are no warranties, expressed or implied, which extend beyond this description. Company is not liable for any personal injury or economic loss resulting from this product.

Supplied As

200ug/ml of Ab Purified from Bioreactor Concentrate by Protein A/G. Prepared in 10mM PBS with 0.05% BSA & 0.05% azide. Also available WITHOUT BSA & azide at 1.0mg/ml.

Storage and Stability

Antibody with azide - store at 2 to 8°C. Antibody without azide - store at -20 to -80°C. Antibody is stable for 24 months. Non-hazardous. No MSDS required.

Research Areas

Autophagy, Developmental Biology