

TFPI2 (Marker of Ovarian Carcinoma) Antibody

Mouse Monoclonal Antibody [Clone TFPI2/13025]

Catalog No	Format	Size
7980-MSM5-P0	Purified Ab with BSA and Azide at 200ug/ml	20 ug
7980-MSM5-P1	Purified Ab with BSA and Azide at 200ug/ml	100 ug
7980-MSM5-P1ABX	Purified Ab WITHOUT BSA and Azide at 1.0mg/ml	100 ug

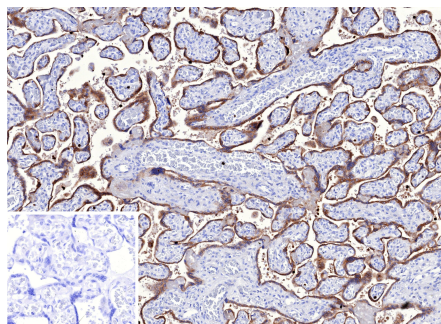
Applications	Tested Dillution	Note
Immunohistochemistry (IHC)	1-2ug/ml	30 min at RT. Staining of formalin-fixed tissues requires heating tissue sections in 10mM Tris with 1mM EDTA, pH 9.0, for 45 min at 95°C followed by cooling at RT for 20 minutes

Product Details

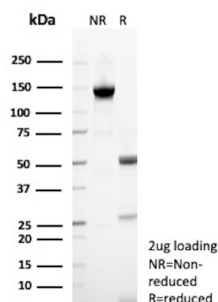
Clone	TFPI2/13025
Gene Name	TFPI2
Immunogen	Recombinant fragment (around aa100-235) of human TFPI2 protein (exact sequence is proprietary)
Host	Mouse
Clonality	Monoclonal
Isotype / Light Chain	IgG1 / Kappa
Mol. Weight of Antigen	27-32kDa
Cellular Localization	Cell membrane
Species Reactivity	Human

*Optimal dilution for a specific application should be determined.

Product Images for TFPI2 (Marker of Ovarian Carcinoma) Antibody



Formalin-fixed, paraffin-embedded human placenta stained with TFPI2 Mouse Monoclonal Antibody (TFPI2/13025). Inset: PBS instead of primary antibody; secondary only negative control.



SDS-PAGE Analysis of Purified TFPI2 Mouse Monoclonal Antibody (TFPI2/13025). Confirmation of Purity and Integrity of Antibody.

Specificity & Comments

The extrinsic pathway of blood coagulation is initiated by contact of plasma factor VII with tissue factor, a cellular membrane glycoprotein that normally is segregated from the bloodstream but can be exposed after tissue injury or newly synthesized in endothelial cells or leukocytes after stimulation by endotoxin and cytokines. Inhibition of Factor VIIa tissue factor activity requires a plasma component (tissue factor pathway inhibitor (TFPI), lipoprotein-associated coagulation inhibitor (LACI) or extrinsic pathway inhibitor (EPI)) and factor Xa. TFPI directly inhibits factor Xa, and, in an Xa-dependent fashion, also inhibits the Factor VIIa tissue factor catalytic complex. TFPI is a multivalent, Kunitz-type proteinase inhibitor that circulates in association with plasma lipoproteins VLDL, LDL, and HDL. TFPI-2 (also known as placental protein 5) is a related glycoprotein that was originally isolated from human placenta.

Limitations and Warranty

This antibody is available for research use only and is not approved for use in diagnosis. There are no warranties, expressed or implied, which extend beyond this description. Company is not liable for any personal injury or economic loss resulting from this product.

Supplied As

200ug/ml of Ab purified from Bioreactor Concentrate by Protein A/G. Prepared in 10mM PBS with 0.05% BSA & 0.05% azide. Also available WITHOUT BSA & azide at 1.0mg/ml.

Storage and Stability

Antibody with azide - store at 2 to 8°C. Antibody without azide - store at -20 to -80°C. Antibody is stable for 24 months. Non-hazardous. No MSDS required.

Research Areas

Cardiovascular, Cell Biology
