

PLA2R1 / Phospholipase A2 Receptor 1 Antibody

Mouse Monoclonal Antibody [Clone PLA2R1/4893]

| Catalog No | Format | Size |
|------------------|---|--------|
| 22925-MSM3-P0 | Purified Ab with BSA and Azide at 200ug/ml | 20 ug |
| 22925-MSM3-P1 | Purified Ab with BSA and Azide at 200ug/ml | 100 ug |
| 22925-MSM3-P1ABX | Purified Ab WITHOUT BSA and Azide at 1.0mg/ml | 100 ug |

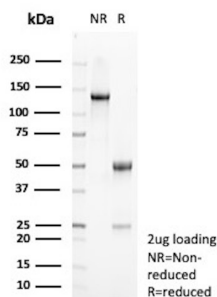
| Applications | Tested Dillution | Note |
|----------------------------|------------------|---|
| Immunohistochemistry (IHC) | 1-2ug/ml | 30 min at RT. Staining of formalin-fixed tissues requires heating tissue sections in 10mM Tris with 1mM EDTA, pH 9.0, for 45 min at 95°C followed by cooling at RT for 20 minutes |

Product Details

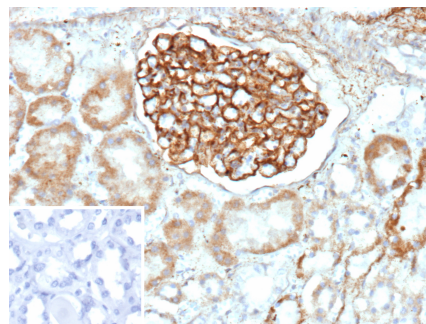
| | |
|-------------------------------|---|
| Clone | PLA2R1/4893 |
| Gene Name | PLA2R1 |
| Immunogen | Recombinant fragment (around aa300-600) of human PLA2R1 protein (exact sequence is proprietary) |
| Host | Mouse |
| Clonality | Monoclonal |
| Isotype / Light Chain | IgG2 / Kappa |
| Mol. Weight of Antigen | 180kDa |
| Cellular Localization | Cell membrane, Secreted |
| Species Reactivity | Human |
| Positive Control | Human kidney. |

*Optimal dilution for a specific application should be determined.

Product Images for PLA2R1 / Phospholipase A2 Receptor 1 Antibody



SDS-PAGE Analysis of Purified PLA2R1 Mouse Monoclonal Antibody (PLA2R1/4893). Confirmation of Purity and Integrity of Antibody.



Formalin-fixed, paraffin-embedded human kidney stained with PLA2R1 Mouse Monoclonal Antibody (PLA2R1/4893). Inset: PBS instead of primary antibody; secondary only negative control.

Specificity & Comments

This gene represents a phospholipase A2 receptor. The encoded protein likely exists as both a transmembrane form and a soluble form. The transmembrane receptor may play a role in clearance of phospholipase A2, thereby inhibiting its action. Polymorphisms at this locus have been associated with susceptibility to idiopathic membranous nephropathy. Alternatively spliced transcript variants encoding different isoforms have been identified.

Supplied As

200ug/ml of Ab purified from Bioreactor Concentrate by Protein A/G. Prepared in 10mM PBS with 0.05% BSA & 0.05% azide. Also available WITHOUT BSA & azide at 1.0mg/ml.

Storage and Stability

Antibody with azide - store at 2 to 8 °C. Antibody without azide - store at -20 to -80 °C. Antibody is stable for 24 months. Non-hazardous. No MSDS required.

Research Areas

Cardiovascular, Metabolism

Limitations and Warranty

This antibody is available for research use only and is not approved for use in diagnosis. There are no warranties, expressed or implied, which extend beyond this description. Company is not liable for any personal injury or economic loss resulting from this product.
