

## Recombinant Galectin-3 (LGALS3) (Thyroid Cell Marker) Antibody

Rabbit Monoclonal Antibody [Clone LGALS3/13233R]

Catalog No	Format	Size
3958-RBM10-P0	Purified Ab with BSA and Azide at 200ug/ml	20 ug
3958-RBM10-P1	Purified Ab with BSA and Azide at 200ug/ml	100 ug
3958-RBM10-P1ABX	Purified Ab WITHOUT BSA and Azide at 1.0mg/ml	100 ug

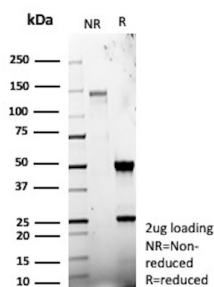
Applications	Tested Dillution	Note

### Product Details

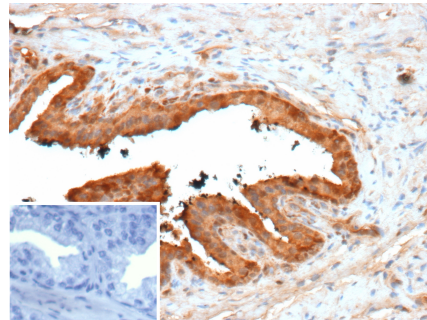
<b>Clone</b>	LGALS3/13233R
<b>Gene Name</b>	LGALS3
<b>Immunogen</b>	Recombinant fragment (around aa1-250) of human LGALS3 protein (exact sequence is proprietary)
<b>Host</b>	Rabbit
<b>Clonality</b>	Monoclonal
<b>Isotype / Light Chain</b>	IgG1 / Kappa
<b>Mol. Weight of Antigen</b>	26kDa
<b>Cellular Localization</b>	Cytoplasm, Nucleus, Secreted
<b>Species Reactivity</b>	Human
<b>Positive Control</b>	Human colon, kidney or prostate. MCF-7 cells.

\*Optimal dilution for a specific application should be determined.

### Product Images for Recombinant Galectin-3 (LGALS3) (Thyroid Cell Marker) Antibody



SDS-PAGE Analysis of Purified Galectin-3 Recombinant Rabbit Monoclonal Antibody (LGALS3/13233R). Confirmation of Purity and Integrity of Antibody.



Formalin-fixed, paraffin-embedded human prostate stained with Galectin-3 Recombinant Rabbit Monoclonal Antibody (LGALS3/13233R). Inset: PBS instead of primary antibody; secondary only negative control.

### Specificity & Comments

Galectin-3 is a member of the beta-galactosidase-binding lectin family. It is associated with cell growth, adhesion, inflammation, mRNA processing, and apoptosis. Aberrant expression of Galectin-3 is related to malignant transformation and metastasis in carcinomas of the breast, colon and thyroid. Galectin-3 reactivity can be seen in the nucleus of neutrophils, vascular endothelium, carcinomas of the colon, breast, and thyroid. Galectin-3 may be useful in the differentiation of benign and malignant thyroid neoplasms. Galectin-3 may also be useful in the identification of certain liver disorders.

### Supplied As

200ug/ml of Ab purified from Bioreactor Concentrate by Protein A/G. Prepared in 10mM PBS with 0.05% BSA & 0.05% azide. Also available WITHOUT BSA & azide at 1.0mg/ml.

### Storage and Stability

Antibody with azide - store at 2 to 8 °C. Antibody without azide - store at -20 to -80 °C. Antibody is stable for 24 months. Non-hazardous. No MSDS required.

### Research Areas

Cardiovascular, Immunology, Dendritic Cell Marker, Nuclear Marker, Transcription Factors

## Limitations and Warranty

This antibody is available for research use only and is not approved for use in diagnosis. There are no warranties, expressed or implied, which extend beyond this description. Company is not liable for any personal injury or economic loss resulting from this product.

---