

HK1 / Hexokinase 1 Antibody

Mouse Monoclonal Antibody [Clone HK1/9514]

Catalog No	Format	Size
3098-MSM11-P0	Purified Ab with BSA and Azide at 200ug/mL	20 ug
3098-MSM11-P1	Purified Ab with BSA and Azide at 200ug/mL	100 ug
3098-MSM11-P1ABX	Purified Ab WITHOUT BSA and Azide at 1.0mg/mL	100 ug

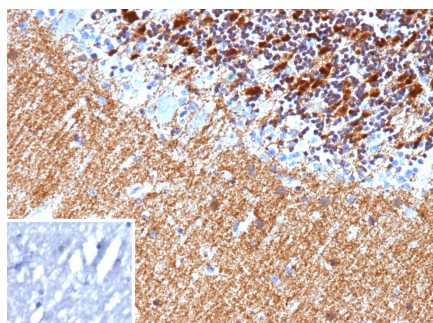
Applications	Tested Dillution	Note
Immunohistochemistry (IHC)	1-2ug/ml	30 min at RT. Staining of formalin-fixed tissues requires heating tissue sections in 10mM Tris with 1mM EDTA, pH 9.0, for 45 min at 95°C followed by cooling at RT for 20 minutes

Product Details

Clone	HK1/9514
Gene Name	HK1
Immunogen	Recombinant fragment (around aa1-250) of human HK1 protein (exact sequence is proprietary)
Host	Mouse
Clonality	Monoclonal
Isotype / Light Chain	IgG2b / Kappa
Mol. Weight of Antigen	102kDa
Cellular Localization	Cytoplasm, Secreted
Species Reactivity	Human
Positive Control	Human brain.

*Optimal dilution for a specific application should be determined.

Product Images for HK1 / Hexokinase 1 Antibody



Formalin-fixed, paraffin-embedded human brain stained with Hexokinase 1 Mouse Monoclonal Antibody (HK1/9514). Inset: PBS instead of primary antibody; secondary only negative control.

Specificity & Comments

Hexokinases phosphorylate glucose to produce glucose-6-phosphate, the first step in most glucose metabolism pathways. This gene encodes a ubiquitous form of hexokinase which localizes to the outer membrane of mitochondria. Mutations in this gene have been associated with hemolytic anemia due to hexokinase deficiency. Alternative splicing of this gene results in several transcript variants which encode different isoforms, some of which are tissue-specific.

Supplied As

200ug/ml of Ab purified from Bioreactor Concentrate by Protein A/G. Prepared in 10mM PBS with 0.05% BSA & 0.05% azide. Also available WITHOUT BSA & azide at 1.0mg/ml.

Storage and Stability

Antibody with azide - store at 2 to 8°C. Antibody without azide - store at -20 to -80°C. Antibody is stable for 24 months. Non-hazardous. No MSDS required.

Research Areas

Cardiovascular

Limitations and Warranty

This antibody is available for research use only and is not approved for use in diagnosis. There are no warranties, expressed or implied, which extend beyond this description. Company is not liable for any personal injury or economic loss resulting from this product.